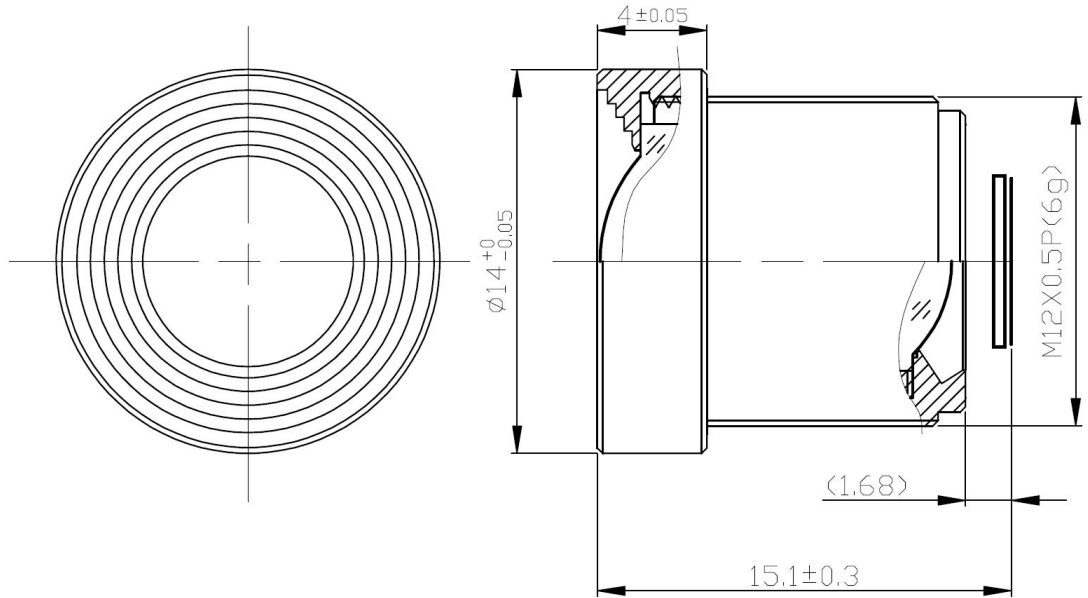


BTOF2512-940



The S-Mount lens Lensagon BTOF2512-940 is suitable for sensors below 1 megapixel with an image format of 1/3 inch. It is characterized by a particularly high light intensity.

Technical Data

Mount	S-Mount
Sensor	1/3 inch
Focal Length	2.5 mm
Aperture	1.2
MOD	0.2 mm
Back Focal	5.18 mm
Angle of View	D:140° H:111.8° V:83°
Optical Distortion	-53 %
Weight	6 g
Iris	fixed
Focus	fixed
Filter	modification
Typ	TOF

SEDECO
IMAGING

Germany, Austria, Switzerland
Sedeco Imaging GmbH
Unterer Dammweg 12
76149 Karlsruhe
Germany
T. +49 721 5604 7980
info@sedeco-imaging.com

BeNeLux
Sedeco Imaging B.V.
Trasmolenlaan 12
3447 GZ Woerden
the Netherlands
T. +31 348 749110
info@sedeco-imaging.nl

www.sedeco-imaging.com

