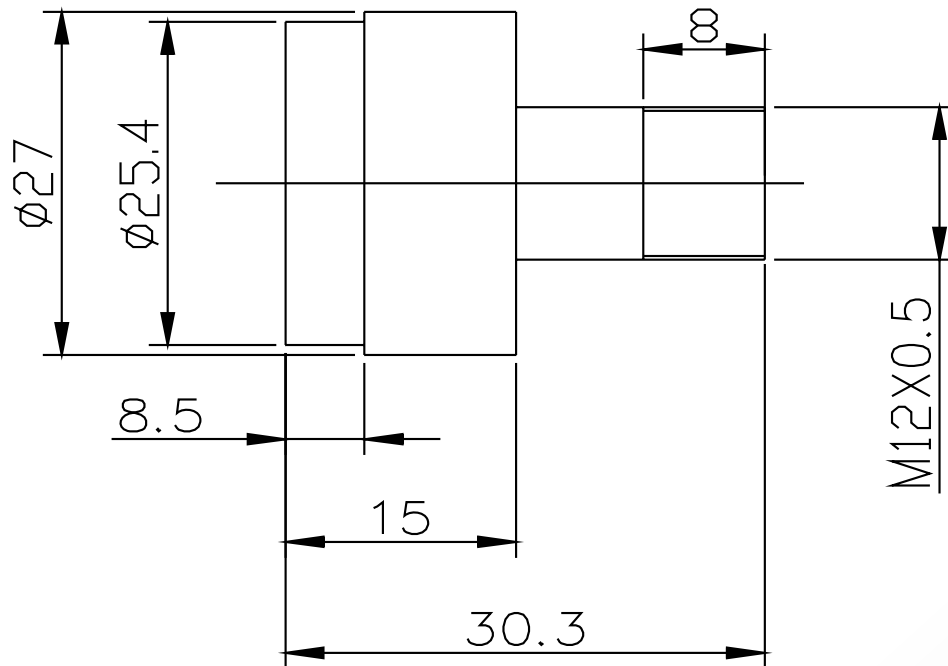


# Lensagon MB16014



The S-Mount lens Lensagon MB16014 is suitable for sensors below 1 megapixel with an image format of 1/3 inch. It is characterized by a particularly high light intensity.

## Technical Data

Mount	S-Mount
Sensor	1/3 inch
Focal Length	16 mm
Aperture	1.4
MOD	0.3 m
Back Focal	11.35 mm
Angle of View	D:22° H:17° V:12°
Megapixel	0.3 MP
IR Cut	No
Weight	29 g
Iris	manual
Focus	fixed
Typ	Standard

