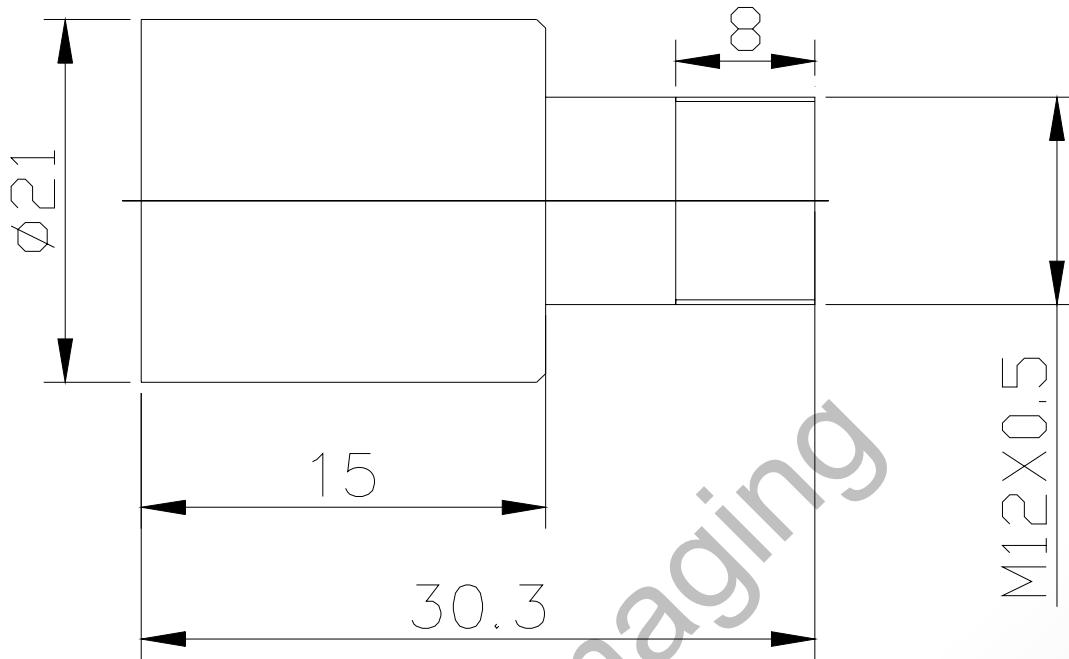


Lensagon BL16014



The S-Mount lens Lensagon BL16014 is suitable for common sensors up to 1 megapixel with an image format of 1/3 inch. It is characterized by a particularly high light intensity.

Technical Data

Mount	S-Mount
Sensor	1/3 inch
Focal Length	16 mm
Aperture	1.4
MOD	0.3 m
Back Focal	11.35 mm
Angle of View	D:28.4° H:22.7° V:17°
Megapixel	1-2 MP
IR Cut	No
Weight	16 g
Iris	fixed
Focus	fixed
Typ	Standard



Germany, Austria, Switzerland
Sedeco Imaging GmbH
 Unterer Dammweg 12
 76149 Karlsruhe
 Germany
 T. +49 721 5604 7980
 info@sedeco-imaging.com

BeNeLux
Sedeco Imaging B.V.
 Trasmolenlaan 12
 3447 GZ Woerden
 the Netherlands
 T. +31 348 749110
 info@sedeco-imaging.nl

www.sedeco-imaging.com



Light Sensitive



1 Megapixel