

MV-CL042-70GC

4K CMOS GigE Line Scan Camera



GEN*i*CAM

GigE
VISION

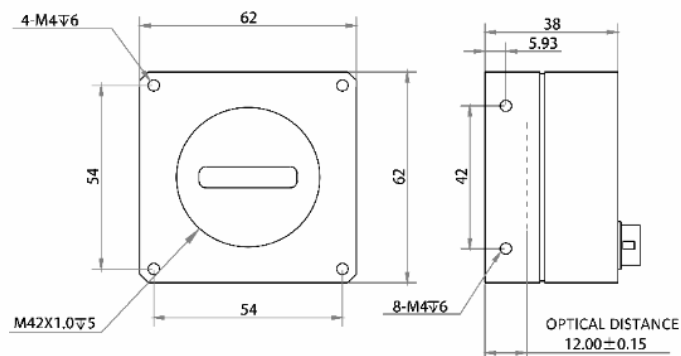
Introduction

MV-CL042-70GC camera adopts GigE interface to transmit non-compressed data in real time with max. line rate reaching 29 kHz. It can work under the low-temperature environment with heating mode enabled.

Key Feature

- Adopts GigE interface and max. transmission distance of 100 meters without relay.
- Supports auto and manual adjustment for gain, exposure control, white balance, LUT, etc.
- Supports high bandwidth function.
- Compatible with GigE Vision Protocol V2.0 and GenICam Standard.

Dimension



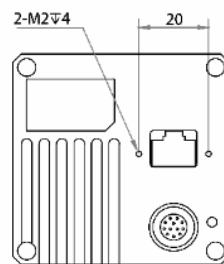
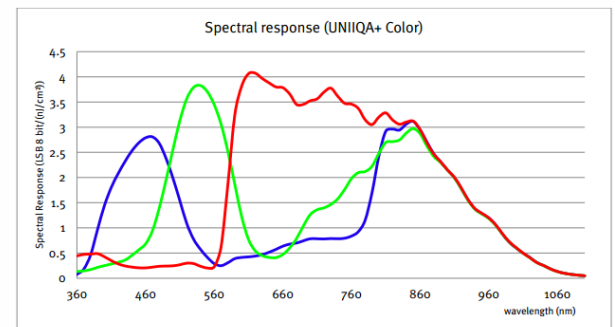
Available Model

Color Camera: MV-CL042-70GC

Applicable Industry

Printing, textiles, railway, logistics, metallurgy, food, pharmaceutical manufacturing, material sorting, etc.

Sensor Quantum Efficiency



Unit: mm



Specification

Model	MV-CL042-70GC
Camera	
Sensor type	CMOS
Pixel size	5 μm
Resolution	4096 × 2
Max. line rate	29 kHz @4096 × 2
Pixel format	Mono 8/10/12, Bayer RG 8/10/10p/12/12p, YUV422Packed, YUV422_YUYV_Packed, RGB 8, BGR 8, RGB 8(HB)
Dynamic range	56 dB
SNR	39.5 dB
Gain	Supports 1x /2x /4x
Exposure time	2 μs to 10 ms
Shutter mode	Off/ Once/ Continuous exposure mode; supports fixed exposure time
Mono/color	Color
Binning	Supports 1 × 1, 2 × 2
External trigger mode	Line trigger, frame trigger
Synchronization	Via external trigger, internal trigger
Reverse image	Supports horizontal reverse image output
Image buffer	384 MB
Electrical features	
Data interface	Gigabit Ethernet
Digital I/O	12-pin Hirose connector provides power and I/O, including differential input x 2 (Line 0, Line 3), differential output x 1 (Line 1), bi-directional I/O x 1 (Line 2), and RS232 x 1.
Power supply	12 VDC to 24 VDC, 12 VDC under heating mode; supports PoE
Power consumption	< 5.3 W@12 VDC
Structure	
Lens mount	M42 x 1.0, back focal length: 12 mm (0.5"), applicable to F-mount, C-mount and lens of other types via lens adapter
Dimension	62 mm × 62 mm × 38 mm (2.4" × 2.4" × 1.5")
Weight	Approx. 170 g (0.37 lb.)
Ingress protection	IP40 (under proper lens installation and wiring)
Temperature	Working temperature: -20 °C to 50 °C (-4 °F to 122 °F) Storage temperature: -30 °C to 70 °C (-22 °F to 158 °F)
Humidity	20% to 80% RH, without condensation
General	
Software	MVS or the third-party software meeting with GigE Vision protocol
Operating system	32/64-bit Windows XP/7/10, 32/64-bit Linux and 64-bit MacOS
Compatibility	GigE Vision V2.0, GenICam
Certification	CE, FCC, RoHS

HIKROBOT

Hangzhou Hikrobot Technology Co., Ltd.
No.399 Danfeng Road, Binjiang District, Hangzhou 310051, China.
en.hikrobotics.com

SEDECO
IMAGING

Germany, Austria, Switzerland
Sedeco Imaging GmbH
Unterer Dammweg 12
76149 Karlsruhe
Germany
T. +49 721 5604 7980
info@sedeco-imaging.com

BeNeLux
Sedeco Imaging B.V.
Trasmolenlaan 12
3447 GZ Woerden
the Netherlands
T. +31 348 749110
info@sedeco-imaging.nl

www.sedeco-imaging.com

Copyright Hikrobot

Hangzhou Hikrobot Technology Co., Ltd. All Rights Reserved. Hangzhou Hikrobot Technology does not tolerate any infringement. Any organization or individual may not imitate or reproduce in whole or in part of the content. The data herein is based on Hikrobot's internal evaluation. Actual data may vary depending on specific configuration and operating condition. The information herein is subject to change without notice. All the content has been checked conscientiously. Nevertheless, Hikrobot shall not be liable to damages resulting from errors, inconsistencies or omissions.