

MV-CL041-70GM

4096P CMOS GigE Line Scan Camera

Introduction

MV-CL041-70GM camera adopts GigE interface to transmit non-compressed data in real time with max. line rate reaching 29 kHz. It can work under the low-temperature environment with heating mode enabled. It also supports various triggering modes.



GEN*i*CAM **GigE**
VISION

Key Feature

- Adopts GigE interface and max. transmission distance of 100 meters without relay
- Supports auto and manual adjustment for gain, exposure control, white balance, LUT, Gamma correction, and etc.
- Adopts compact structure design and installation holes for flexible installation
- Compatible with GigE Vision Protocol and GenICam Standard

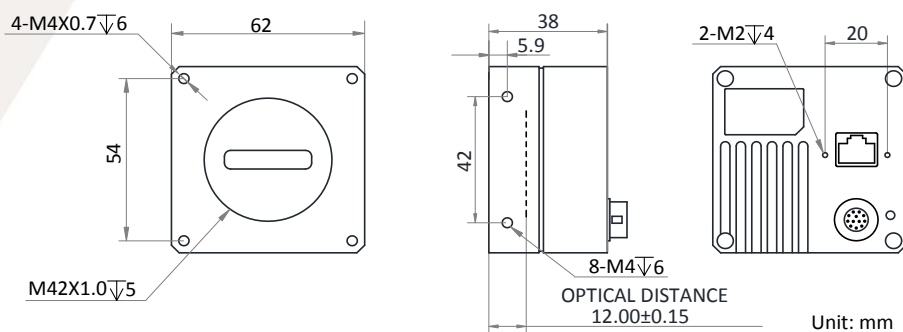
Applicable Industry

Printing, metallurgy, food, transportation, logistics, textiles, railway, material sorting, pharmaceutical manufacturing and etc.

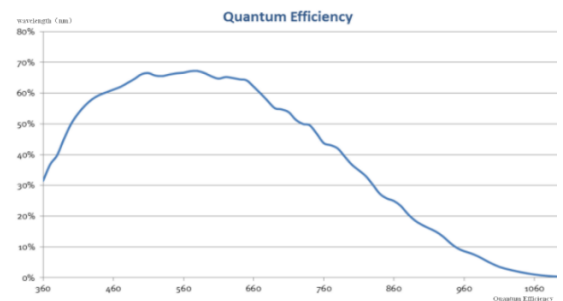
Available Model

Mono camera: MV-CL041-70GM

Dimension



Sensor Quantum Efficiency



Specification

| | |
|------------------------------------|---|
| Model | MV-CL041-70GM |
| Parameters | 4096P CMOS GigE Line Scan Camera |
| Camera | |
| Sensor type | CMOS |
| Pixel size | 5 μm x 5 μm |
| Resolution | 4096 x 1 |
| Line rate | 29 kHz |
| Pixel format | Mono 8/10/10p/12/12p |
| Dynamic range | 70 dB |
| SNR | 42 dB |
| Gain | Supports 1x /2x /4x |
| Exposure time | 2 μs to 10 ms |
| Shutter mode | Off/ Once/ Continuous exposure mode; supports fixed exposure time |
| Reverse image | Supports horizontal reverse image output |
| Binning | Supports 1/2/3/4 |
| External trigger mode | Line trigger, frame trigger, line + frame trigger |
| Synchronization signal mode | External trigger, internal trigger |
| Image buffer | 128 MB |
| Electrical features | |
| Data interface | Gigabit Ethernet (1000Mbit/s), compatible with Fast Ethernet (100Mbit/s) |
| Digital I/O | 12-pin Hirose connector provides power and I/O: differential input x2 (Line 0, Line 3), differential output x1 (Line 1), bi-directional I/O x1 (Line 2), and RS232 x1 |
| Power supply | 12 VDC to 24 VDC, 12 VDC under heating mode; supports PoE power supply |
| Power consumption | < 4.0 W@12 VDC |
| Structure | |
| Lens mount | M42 x1.0, optical back focal length 12mm (0.5"), applicable to F-mount, C-mount and lens of other types via adapter ring |
| Dimension | 62 mm x 62 mm x 38 mm (2.4" x 2.4" x 1.5") |
| Weight | Approx. 170g (0.37 lb.) |
| Ingress protection | IP40 (under proper lens installation and wiring) |
| Temperature | Working temperature: -20 °C to 50 °C (-4 °F to 122 °F) Storage temperature: -30 °C to 70 °C (-22 °F to 158 °F) |
| Humidity | 20% to 80% RH, without condensation |
| General | |
| Client software | MVS and the third-party software meeting with GigE Vision protocol |
| Operating system | 32/64-bit Windows XP/7/10, 32/64-bit Linux or 64-bits MacOS |
| Compatibility | GigE Vision V2.0 protocol, GenICam standard |
| Certification | CE, FCC, KC, RoHS |



Germany, Austria, Switzerland
 Sedeco Imaging GmbH
 Unterer Dammweg 12
 76149 Karlsruhe
 Germany
 T. +49 721 5604 7980
 info@sedeco-imaging.com

BeNeLux
 Sedeco Imaging B.V.
 Trasmolenlaan 12
 3447 GZ Woerden
 the Netherlands
 T. +31 348 749110
 info@sedeco-imaging.nl

www.sedeco-imaging.com