

MV-CL020-41GC

2K Line Scan CMOS GigE Camera

Introduction

MV-CL020-41GC is a high quality device that can be used in a variety of applications, including printing, metallurgy, food, pharmaceutical, transportation, logistics and material sorting



GEN<i>i</i>CAM

GiGE
VISION

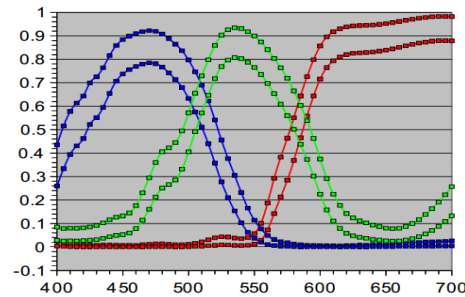
Key Feature

- Adopts GigE interface and max. transmission distance of 100 meters without relay
- 128MB on-board buffer, for image burst transmitting and retransmitting
- Supports auto exposure control, LUT and Gamma correction
- Cameras can be synchronized with hard trigger and soft trigger
- Different exposure modes can be used to capture image
- Supports Region of Interest output
- Compatible with third party software that meets with GigE Vision V1.2

Recommended Accessories

- **Power:** 12VDC @1A power adapter
- **NIC:** Intel Pro1000 or higher
- **Network Cable:** CAT5e or CAT6 network cable recommended

Sensor Quantum Efficiency



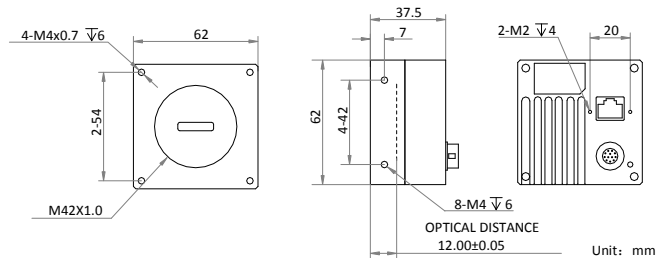
Applicable Industry

Printing, metallurgy, food, pharmaceutical, transportation, logistics, material sorting

Available Model

- Color camera: MV-CL020-41GC

Dimension



Specification

Model	MV-CL020-41GC
Parameters	2K Line Scan CMOS GigE Camera
Camera	
Sensor type	CMOS
Pixel size	7 μm x 7 μm
Resolution	2048 x 2
Line rate	26 KHz
Shutter mode	Auto-exposure, timed exposure and trigger width control
Dynamic range	60 dB
SNR	40 dB
Gain	0 dB to 7.9 dB
Exposure time	2 μs to 10 ms
External trigger mode	Line trigger and frame trigger
Synchronization trigger mode	External trigger or software trigger
Image buffer	128 MB
Pixel format	Mono 8/10/12, Bayer RG 8/10/10p/12/12p, YUV 422 Packed, YUYV422_YUYV_Packed, RGB 8, JPEG
Electrical features	
Data interface	Gigabit Ethernet
Digital I/O	12-pin Hirose interface for power supply and I/O, differential input × 2, single-end input × 1, and differential output × 2
Power supply	5 VDC to 15 VDC, supports PoE power supply
Power consumption	< 4 W
Structure	
Lens mount	M42×1.0, back focal distance 12mm, F mount or C mount lens supported with lens adapter
Dimension	62 mm × 62 mm × 37.5 mm (2.4" × 2.4" × 1.5")
Weight	Approx. 170 g (0.4 lb.)
Ingress protection	IP40 (under proper lens installation and wiring)
Temperature	Working temperature: 0 °C to 50 °C (32 °F to 122 °F) Storage temperature: -30 °C to 70 °C (-22 °F to 158 °F)
Humidity	20% to 80% RH, without condensation
General	
Client software	MVS or third-party software meeting with GigE Vision Protocol
Operating system	32/64-bit Windows XP/7/10, 32/64-bit Linux and 64-bit MacOS
Compatibility	GigE Vision
Certification	CE, FCC, RoHS, KC



Germany, Austria, Switzerland
 Sedeco Imaging GmbH
 Unterer Dammweg 12
 76149 Karlsruhe
 Germany
 T. +49 721 5604 7980
 info@sedeco-imaging.com

BeNeLux
 Sedeco Imaging B.V.
 Trasmolenlaan 12
 3447 GZ Woerden
 the Netherlands
 T. +31 348 749110
 info@sedeco-imaging.nl

www.sedeco-imaging.com