

MV-CL020-40GM

2K Line Scan CMOS GigE Camera

Introduction

MV-CL020-40GM is a high quality device that can be used in a variety of applications, including printing inspection, food sorting, pharma inspection, ITS and logistics inspection.



GEN<i>i>CAM

GigE
VISION

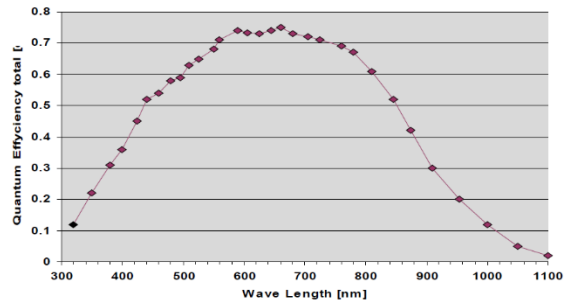
Key Feature

- Adopts GigE interface and max. transmission distance of 100 meters without relay
- 128MB on-board buffer, for image burst transmitting and retransmitting
- Supports auto exposure control, LUT and Gamma correction
- Cameras can be synchronized with hard trigger and soft trigger
- Different exposure modes can be used to capture image
- Supports Region of Interest output
- Multiple lens interfaces supported with lens adapter
- Compliant with third party software that meets with GigE Vision V1.2

Recommended Accessories

- **Power:** 12VDC @1A power adapter
- **NIC:** Intel Pro1000 and above version recommended
- **Network Cable:** CAT5e or CAT6 network cable recommended

Sensor Quantum Efficiency



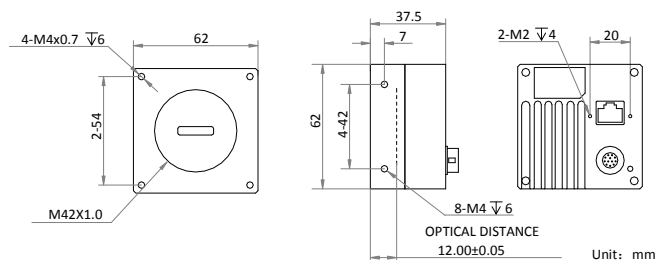
Applicable Industry

Printing, metallurgy, food sorting, pharmaceutical inspection, logistics inspection, ITS

Available Model

- Mono: MV-CL020-40GM

Dimension



Specification

	Model	MV-CL020-40GM
Parameters		2K Line Scan CMOS GigE Camera
Camera		
Sensor type		CMOS
Pixel size		7 μm x 7 μm
Resolution		2048 x 1
Line rate		51 KHz
Shutter mode		Auto-exposure, timed exposure and trigger width control
Dynamic range		60 dB
SNR		40 dB
Gain		0 dB to 11.7 dB
Exposure time		2 μs to 10 ms
External trigger mode		Line trigger and frame trigger
Synchronization trigger mode		External trigger or software trigger
Image buffer		128 MB
Pixel format		Mono 8/10/10p/12/12p
Electrical features		
Data interface		Gigabit Ethernet
Digital I/O		12-pin Hirose interface for power supply and IO, differential input x2, single-end input x1, and differential output x2
Power supply		5 VDC to 15 VDC, supports PoE power supply
Power consumption		< 4 W
Structure		
Lens mount		M42x1.0, back focal distance 12mm, F mount or C mount lens supported with lens adapter
Dimension		62 mm × 62 mm × 37.5 mm (2.4" × 2.4" × 1.5")
Weight		Approx. 170 g (0.4 lb.)
Ingress protection		IP40 (under proper lens installation and wiring)
Temperature		Working temperature: 0 °C to 50 °C (32 °F to 122 °F) Storage temperature: -30 °C to 70 °C (-22 °F to 158 °F)
Humidity		20% to 80% RH, without condensation
General		
Client software		MVS or third-party software meeting with GigE Vision Protocol
Operating system		32/64-bit Windows XP/7/10, 32/64-bit Linux and 64-bit MacOS
Compatibility		GigE Vision
Certification		CE, FCC, RoHS, KC



Germany, Austria, Switzerland
Sedeco Imaging GmbH
 Unterer Dammweg 12
 76149 Karlsruhe
 Germany
 T. +49 721 5604 7980
 info@sedeco-imaging.com

BeNeLux
Sedeco Imaging B.V.
 Trasmolenlaan 12
 3447 GZ Woerden
 the Netherlands
 T. +31 348 749110
 info@sedeco-imaging.nl

www.sedeco-imaging.com