

## MVL-HT-2-110

### 2 x 110mm 1/2" TELECENTRIC LENS

HT series Telecentric Lens are designed for machine vision application with excellent imaging quality, magnification range from 0.5x to 2.0x, working distance range from 65mm to 150mm, optional point light interface.



### Key Features

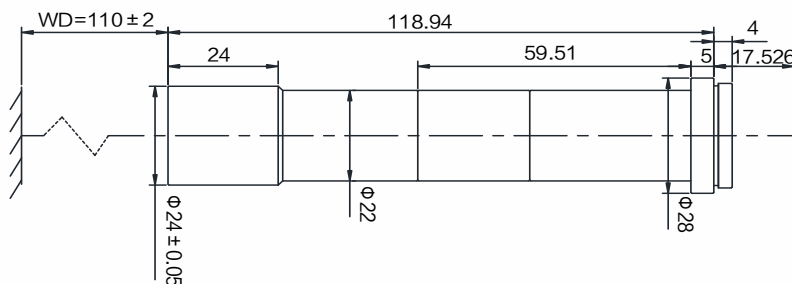
- High resolution and uniformity of image definition
- Low optical distortion and high telecentricity, more suitable for high precision measurement application
- Excellent anti-vibration performance and stability performance in temperature variation
- Image size compatible with 1/1.8"

### Specification

Model		MVL-HT-2-110					
Parameter		2x 110mm 1/2" TELECENTRIC LENS					
Magnification	2x		Working Distance	110±2mm			
Depth of Field*	0.32mm		Resolution	5.37µm			
Optical Distortion	≤ 0.1%		Telecentricity	≤ 0.1°			
F-Number	F16		Object Space NA	0.0625			
Image Size	Φ8.4mm		Object-image Distance	246.47 ± 2mm			
Mount	C-Mount		Dimension	118.94mm × 24mm			
Operating Temperature	-10~50°C		Weight	88g			
Field of View (mm)	D	1/3"	3	1/2"	4	1/1.8"	4.45
	H		2.4		3.2		3.6
	V		1.8		2.4		2.65

\*The Depth of Field is the theoretical calculated value when the diameter of the maximum confusion circle is 40µm.

### Dimension



Unit: mm

**SEDECO**  
 IMAGING

Germany, Austria, Switzerland  
 Sedeco Imaging GmbH  
 Unterer Dammweg 12  
 76149 Karlsruhe  
 Germany  
 T. +49 721 5604 7980  
 info@sedeco-imaging.com

BeNeLux  
 Sedeco Imaging B.V.  
 Trasmolenlaan 12  
 3447 GZ Woerden  
 the Netherlands  
 T. +31 348 749110  
 info@sedeco-imaging.nl

[www.sedeco-imaging.com](http://www.sedeco-imaging.com)