

MV-CH250-20TC

25 MP CMOS 10 GigE Camera

Introduction

MV-CH250-20TC camera adopts OnSemi PYTHON25K sensor to provide high-quality image. It uses 10 GigE interface to transmit non-compressed image in real-time with max. frame rate reaching 40 fps.



Key Feature

- Resolution of 5120 × 5120 and pixel size of 4.5 μm × 4.5 μm
- Adopts 10 GigE interface providing max. transmission distance of 100 meters without relay
- Up to 1024 MB local memory for burst transmission and retransmission
- Supports serial communication, and communication protocol RS232
- Compatible with GigE Vision Protocol and the third party software based on the protocol

GEN*i*CAM

10GigE
VISION

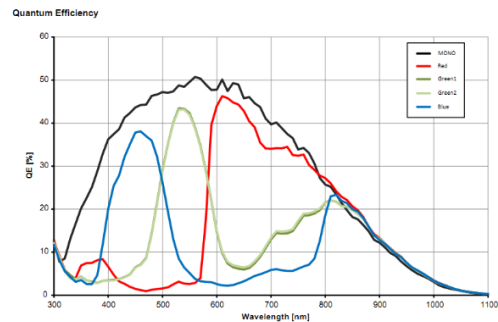
Applicable Industry

SMT/ PCB AOI, FPD, railway related applications, etc.

Sensor Quantum Efficiency

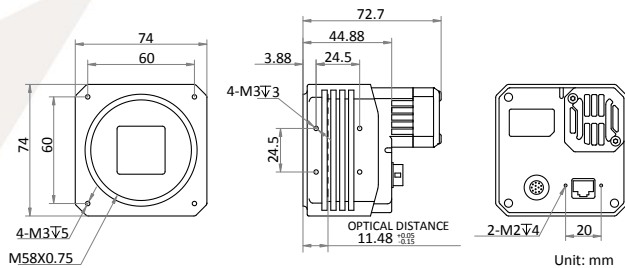
Available Model

- M58-mount with fan, color camera: MV-CH250-20TC-M58S-NF
- F-mount with fan, color camera: MV-CH250-20TC-F-NF

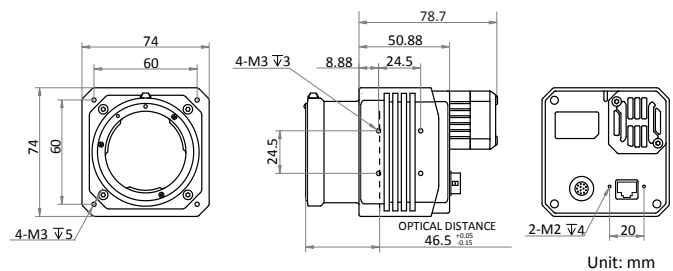


Dimension

M58-mount with fan:



F-mount with fan:



Specification

Model	MV-CH250-20TC
Camera	
Sensor type	CMOS, global shutter
Sensor model	OnSemi PYTHON25K
Pixel size	4.5 μm \times 4.5 μm
Sensor size	23 mm \times 23 mm
Resolution	5120 \times 5120
Frame rate	40 fps
Dynamic range	58 dB
SNR	41 dB
Gain	0 dB to 15 dB
Exposure time	45 μs to 10 s
Shutter mode	Off/Once/Continuous exposure mode
Pixel format	Bayer RG 8/10/10p/12/12p
Image buffer	1024 MB
Electrical features	
Data interface	10 Gigabit Ethernet, compatible with Gigabit Ethernet
Digital I/O	12-pin Hirose connector provides power and I/O, including opto-isolated input x 1 (Line0), opto-isolated output x 1 (Line1), bi-directional non-isolated I/O x 1 (Line2), RS232 x 1, and full-duplex RS485 x 1
Power supply	9 VDC to 26 VDC
Power consumption	Approx. 14 W@12 VDC
Structure	
Lens mount	M58-mount, optical back focal length 11.48 mm (0.45") F-mount, optical back focal length 46.5 mm (1.8")
Dimension	M58-mount with fan: 74 mm \times 74 mm \times 72.7 mm (2.9" \times 2.9" \times 2.86") F-mount with fan: 74 mm \times 74 mm \times 78.7 mm (2.9" \times 2.9" \times 3.1")
Weight	M58-mount with fan: < 450 g (1.0 lb.), F-mount with fan: < 600 g (1.3 lb.)
Ingress protection	IP40 (under proper lens installation and wiring)
Temperature	Working temperature: 0 $^{\circ}\text{C}$ to 50 $^{\circ}\text{C}$ (32 $^{\circ}\text{F}$ to 122 $^{\circ}\text{F}$) Storage temperature: -30 $^{\circ}\text{C}$ to 70 $^{\circ}\text{C}$ (-22 $^{\circ}\text{F}$ to 158 $^{\circ}\text{F}$)
Humidity	20% to 95% RH, without condensation
General	
Client software	MVS or third-party software meeting with GigE Vision Protocol
Operating system	32/64-bit Windows XP/7/10
Compatibility	GigE Vision V1.2, GenICam
Certification	CE, FCC, RoHS, KC

SEDECO
IMAGING

Germany, Austria, Switzerland
Sedeco Imaging GmbH
 Unterer Dammweg 12
 76149 Karlsruhe
 Germany
 T. +49 721 5604 7980
 info@sedeco-imaging.com

BeNeLux
Sedeco Imaging B.V.
 Trasmolenlaan 12
 3447 GZ Woerden
 the Netherlands
 T. +31 348 749110
 info@sedeco-imaging.nl

www.sedeco-imaging.com