

MV-CH089-10GM/GC

8.9 MP 1" CMOS GigE Area Scan Camera

Introduction

MV-CH089-10GM/GC camera adopts Sony IMX267 sensor to provide high-quality image. It uses GigE interface to transmit non-compressed images in real time with max. frame rate reaching 13 fps.



Key Feature

- Adopts GigE interface and max. transmission distance of 100 meters without relay
- Support auto exposure control, LUT, Gamma correction, etc.
- Up to 128 MB local memory for burst transmission and retransmission
- Supports hardware triggering and software triggering
- Supports auto white balance and better color correction with excellent image interpolation algorithm
- Compatible with GigE Vision Protocol V2.0, GenCam Standard, and third-party software based on these protocol and standard

GEN*<i>i>*CAM

GIG*E* VISION

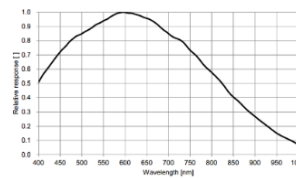
Available Model

- Mono Camera: MV-CH089-10GM
- Color Camera: MV-CH089-10GC

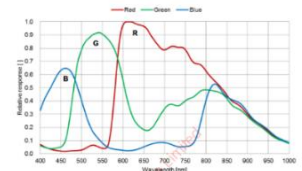
Applicable Industry

Electronic semiconductor, factory automation, logistics code reading, medicine packaging, etc.

Sensor Quantum Efficiency

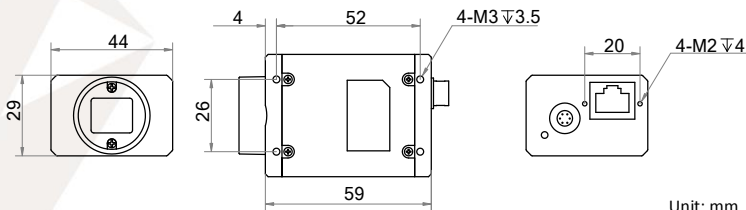


MV-CH089-10GM



MV-CH089-10GC

Dimension



Unit: mm



Specification

Model	MV-CH089-10GM	MV-CH089-10GC
Camera		
Sensor type	CMOS, global shutter	
Sensor model	Sony IMX267	
Pixel size	3.45 μm × 3.45 μm	
Sensor size	1"	
Resolution	4096 × 2160	
Frame rate	13 fps	
Dynamic range	72.5 dB	
SNR	40.1 dB	
Gain	0 dB to 20 dB	
Exposure time	15 μs to 10 s	
Shutter mode	Off/Once/Continuous exposure mode	
Mono/color	Mono	Color
Pixel format	Mono 8/10/10p/12/12p	Mono 8/10/12, Bayer RG 8/10/10p/12/12p, YUV422Packed, YUV422_YUYV_Packed, RGB8
Acquisition mode	Continuous mode and SingleFrame mode	
Binning	Supports 2 × 2, 4 × 4	
Decimation	Supports 1 × 2, 2 × 1, 2 × 2	
Reverse image	Supports horizontal and vertical reverse image output	
Image buffer	128 MB	
Electrical features		
Data interface	Gigabit Ethernet	
Digital I/O	6-pin Hirose connector provides power and I/O, including opto-isolated input x 1 (Line0), opto-isolated output x 1 (Line1), bi-directional non-isolated I/O x 1 (Line2)	
Power supply	5 VDC to 15 VDC, supports PoE power supply	
Power consumption	< 3.72 W@12 VDC	
Structure		
Lens mount	C-Mount	
Dimension	44 mm × 29 mm × 59 mm (1.7" × 1.1" × 2.3")	
Weight	< 100 g (0.2 lb.)	
Ingress protection	IP30 (under proper lens installation and wiring)	
Temperature	Working temperature: 0 °C to 50 °C (32 °F to 122 °F) Storage temperature: -30 °C to 70 °C (-22 °F to 158 °F)	
Humidity	20% to 80% RH, without condensation	
General		
Client software	MVS or third-party software meeting with GigE Vision Protocol	
Operating system	32/64-bit Windows XP/7/10, 32/64-bit Linux and 64-bit MacOS	
Compatibility	GigE Vision V2.0, GenICam	
Certification	CE, FCC, RoHS, KC	

<p>Germany, Austria, Switzerland Sedeco Imaging GmbH Unterer Dammweg 12 76149 Karlsruhe Germany T. +49 721 5604 7980 info@sedeco-imaging.com</p>	<p>BeNeLux Sedeco Imaging B.V. Trasmolenlaan 12 3447 GZ Woerden the Netherlands T. +31 348 749110 info@sedeco-imaging.nl</p>
---	---

www.sedeco-imaging.com