

## MV-CH430-61CM-F-TF

43 MP CCD CameraLink Area Scan Camera

### Introduction

MV-CH430-61CM-F-TF camera adopts OnSemi KAI-43140 sensor to provide high-quality image. It uses CameraLink interface to transmit non-compressed images in real time with max. frame rate reaching 3.64 fps. The camera adopts TEC to keep the camera's sensor temperature around environment temperature.



**GEN*i*CAM**

**CAMERA Link**

### Key Feature

- Resolution of 8032 × 5360, and pixel size of 4.5 μm × 4.5 μm
- Global shutter CCD, high dynamic range and signal-to-noise ratio, high image quality
- Supports configuration modes of Base and Medium via the CameraLink interface
- Adopts unique cooling technology
- On-board tap balance and flat field correction

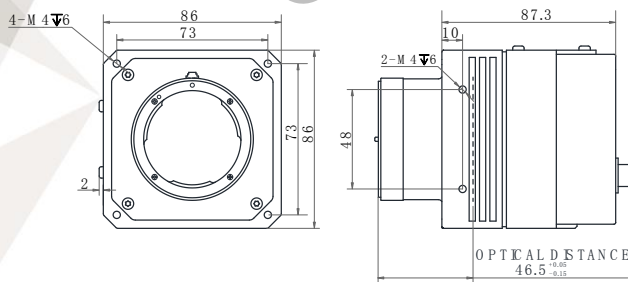
### Available Model

Mono Camera: MV-CH430-61CM-F-TF

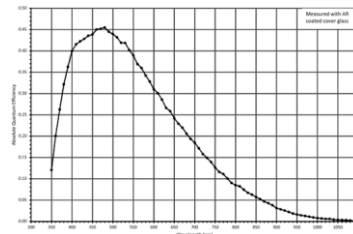
### Applicable Industry

SMT/PCB AOI, FPD, display screen detection, etc.

### Dimension



### Sensor Quantum Efficiency



## Specification

<b>Model</b>	<b>MV-CH430-61CM-F-TF</b>	
<b>Camera</b>		
<b>Sensor type</b>	CCD, global shutter	
<b>Sensor model</b>	OnSemi KAI-43140	
<b>Pixel size</b>	4.5 $\mu\text{m}$ x 4.5 $\mu\text{m}$	
<b>Sensor size</b>	36 mm x 24 mm	
<b>Resolution</b>	8032 x 5360	
<b>Pixel clock</b>	85 MHz	
<b>Configuration mode</b>	Base	Medium
<b>Sensor combination</b>	1X_2YE	1X2_2YE
<b>Tap number</b>	2 Taps	4 Taps
<b>Frame rate</b>	3.64 fps	
<b>Pixel format</b>	Mono 8/10/12	
<b>Dynamic range</b>	60 dB	
<b>SNR</b>	40 dB	
<b>Gain</b>	0 dB to 20 dB	
<b>Exposure time</b>	100 $\mu\text{s}$ to 2 s	
<b>Shutter mode</b>	Off/ Once/ Continuous exposure mode	
<b>Mono/color</b>	Mono	
<b>Binning</b>	Supports 1 x 2, 2 x 1, 2 x 2	
<b>Decimation</b>	Not support	
<b>Reverse image</b>	Supports horizontal reverse image output	
<b>Electrical features</b>		
<b>Data interface</b>	CameraLink with SDR interface	
<b>Digital I/O</b>	12-pin Hirose connector provides power supply and I/O, including opto-isolated input x1 (Line0), opto-isolated output x1 (Line1), RS232 x1	
<b>Power supply</b>	22 VDC to 26 VDC	
<b>Power consumption</b>	Approx. 10 W@24 VDC (Non-TEC cooling mode) Approx. 60 W@24 VDC (TEC cooling mode)	
<b>Structure</b>		
<b>Lens mount</b>	F-Mount, optical back focal length: 46.5 mm (1.8")	
<b>Dimension</b>	86 mm x 86 mm x 87.3 mm (3.39" x 3.39" x 3.44")	
<b>Weight</b>	Approx. 900 g (1.98 lb.)	
<b>Ingress protection</b>	IP40 (under proper lens installation and wiring)	
<b>Temperature</b>	Working temperature: 0 °C to 50 °C (32 °F to 122 °F) Storage temperature: -30 °C to 70 °C (-22 °F to 158 °F)	
<b>Humidity</b>	20% to 95% RH, without condensation	
<b>General</b>		
<b>Client software</b>	MVS or frame grabber software meeting with GenICam Protocol	
<b>Operating system</b>	32/64-bit Windows XP/7/10	
<b>Compatibility</b>	CameraLink, GenICam	
<b>Certification</b>	CE, FCC, RoHS, KC	