

MV-CE050-30GM

5 MP 1/2.5" CMOS GigE Area Scan Camera



GEN<i>i</i>CAM

GigE
VISION

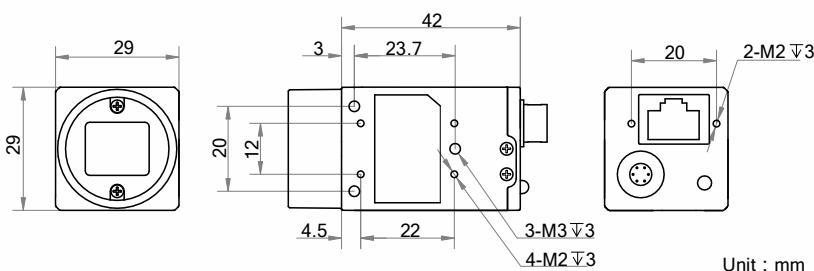
Introduction

MV-CE050-30GM camera is a high quality device that can be used in a variety of applications, including electronic semiconductor fabrication, factory automation, quality inspection.

Key Feature

- Adopts GigE interface and max. transmission distance of 100 meters without relay
- Up to 128 MB local memory for burst transmission and retransmission
- Supports auto exposure control, LUT, Gamma correction, etc.
- Supports hardware trigger, software trigger, etc.
- Compatible with GigE Vision V1.2 Protocol, GenICam Standard, and third-party software based on the protocol and standard

Dimension



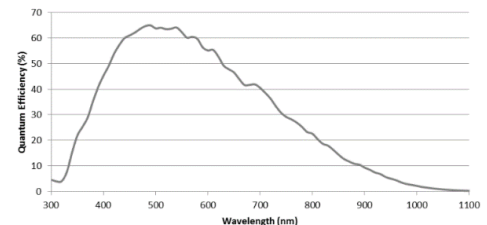
Available Model

Mono camera: MV-CE050-30GM

Applicable Industry

Electronic semiconductor, factory automation, quality inspection.

Sensor Quantum Efficiency



Specification

Model	MV-CE050-30GM
Camera	
Sensor type	COMS, rolling shutter
Sensor model	MT9P031
Pixel size	2.2 μm \times 2.2 μm
Sensor size	1/2.5"
Resolution	2592 \times 1944
Max. frame rate	14 fps @2592 \times 1944
Dynamic range	60 dB
SNR	38 dB
Gain	0 dB to 20 dB
Exposure time	34 μs to 1 s
Shutter mode	Off/Once/Continuous exposure mode
Mono/color	Mono
Pixel format	Mono 8/10/10p/12/12p
Binning	Not support
Decimation	Not support
Image buffer	128 MB
Electrical features	
Data interface	Gigabit Ethernet
Digital I/O	Opto-isolated input \times 1, Opto-isolated output \times 1, Bi-directional non-isolated I/O \times 1
Power supply	Voltage range: 5 VDC to 15 VDC, supports PoE power supply
Power consumption	< 2.75 W@12 VDC
Structure	
Lens mount	C-Mount
Dimension	29 mm \times 29 mm \times 42 mm (1.1" \times 1.1" \times 1.7")
Weight	Approx. 68 g (0.15 lb.)
Ingress protection	IP30 (under proper lens installation and wiring)
Temperature	Working temperature: 0 $^{\circ}\text{C}$ to 50 $^{\circ}\text{C}$ (32 $^{\circ}\text{F}$ to 122 $^{\circ}\text{F}$) Storage temperature: -30 $^{\circ}\text{C}$ to 70 $^{\circ}\text{C}$ (-22 $^{\circ}\text{F}$ to 158 $^{\circ}\text{F}$)
Humidity	20% to 80% RH, without condensation
General	
Client software	MVS or Third-Party Software meeting with GigE Vision Protocol
Operating system	32/64-bit Windows XP/7/10, 32/64-bit Linux and 64-bit MacOS
Compatibility	GigE Vision
Certification	CE, FCC, RoHS, KC

HIKROBOT

Hangzhou Hikrobot Technology Co., Ltd.
No.399 Danfeng Road, Binjiang District, Hangzhou 310051, China.
en.hikrobotics.com

Copyright Hikrobot

Hangzhou Hikrobot Technology Co., Ltd. All Rights Reserved. Hangzhou Hikrobot Technology does not tolerate any infringement. Any organization or individual may not imitate or reproduce in whole or in part of the content. The data herein is based on Hikrobot's internal evaluation. Actual data may vary depending on specific configuration and operating condition. The information herein is subject to change without notice. All the content has been checked conscientiously. Nevertheless, Hikrobot shall not be liable to damages resulting from errors, inconsistencies or omissions.

SEDECO

IMAGING

Germany, Austria, Switzerland
Sedeco Imaging GmbH
Unterer Dammweg 12
76149 Karlsruhe
Germany
T. +49 721 5604 7980
info@sedeco-imaging.com

BeNeLux
Sedeco Imaging B.V.
Trasmolenlaan 12
3447 GZ Woerden
the Netherlands
T. +31 348 749110
info@sedeco-imaging.nl

www.sedeco-imaging.com