

MV-CE013-50GM/GC

1.3 MP, 1/3" CCD, GigE Area Scan Camera

Introduction

MV-CE013-50GM/GC 1.3 MP 1/3" CCD GigE Camera is a high quality device that can be used in a variety of applications, including electronic semiconductor fabrication, factory automation, quality inspection.



Key Feature

- Adopts GigE interface and max. transmission distance of 100 meters without relay
- Up to 128 MB local memory for burst transmission and retransmission
- Supports auto exposure control, LUT, Gamma correction, and etc.
- Supports hardware trigger, software trigger, and etc.
- Supports auto white balance and better color correction with excellent image interpolation algorithm
- Compatible with GigE Vision V1.2 Protocol and the third-party software based on the protocol

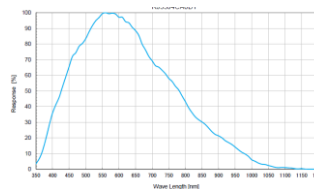
GEN*i*CAM

GIG*E* VISION

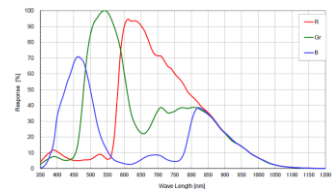
Accessories

- Power: 12 VDC @1A power adapter
- NIC: Intel Pro1000 and above version recommended
- Network Cable: CAT5e or CAT6 network cable recommended

Sensor Quantum Efficiency



MV-CE013-50GM



MV-CE013-50GC

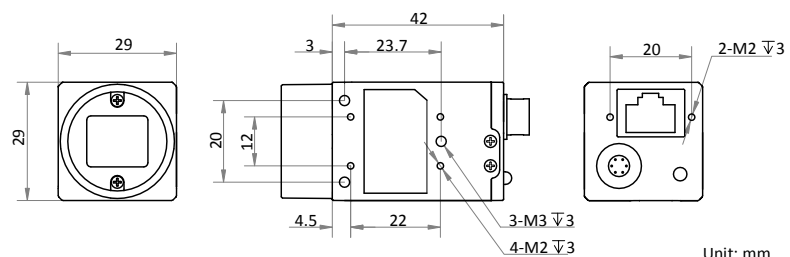
Applicable Industry

Electronic semiconductor, factory automation, quality inspection and etc.

Available Model

- Mono Camera: MV-CE013-50GM
- Color Camera: MV-CE013-50GC

Dimension



Unit: mm



Specification

Model	MV-CE013-50GM	MV-CE013-50GC
Parameters	1.3 MP, 1/3" CCD, GigE Area Scan Camera	
Camera		
Sensor type	CCD, global shutter	
Sensor model	RJ33	
Pixel size	3.75 μm \times 3.75 μm	
Sensor size	1/3"	
Resolution	1280 \times 960	
Frame rate	30 fps	
Dynamic range	60 dB	
SNR	37 dB	
Gain	0 dB to 20 dB	
Exposure time	34 μs to 1 s	
Shutter mode	Off/Once/Continuous exposure mode	
Pixel format	Mono 8/10/10p/12/12p	Mono 8/10/12, Bayer GR 8/10/10p/12/12p, YUV 422 Packed, YUV422_YUYV_Packed, RGB8
Reverse image	Supports horizontal reverse image output	
Image buffer	128 MB	
Electrical features		
Data interface	Gigabit Ethernet	
Digital I/O	Opto-isolated input x 1, opto-isolated output x 1, and bi-directional non-isolated I/O x 1	
Power supply	5 VDC to 15 VDC, supports PoE power supply	
Power consumption	Approx. 2.6 W@12 VDC	
Structure		
Lens mount	C-Mount	
Dimension	29 mm \times 29 mm \times 42 mm (1.1" \times 1.1" \times 1.7")	
Weight	Approx. 68 g (0.15 lb.)	
Ingress protection	IP30 (under proper lens installation and wiring)	
Temperature	Working temperature: 0 $^{\circ}\text{C}$ to 50 $^{\circ}\text{C}$ (32 $^{\circ}\text{F}$ to 122 $^{\circ}\text{F}$) Storage temperature: -30 $^{\circ}\text{C}$ to 70 $^{\circ}\text{C}$ (-22 $^{\circ}\text{F}$ to 158 $^{\circ}\text{F}$)	
Humidity	20% to 80% RH, without condensation	
General		
Client software	MVS or third-party software meeting with GigE Vision Protocol	
Operating system	32/64-bit Windows XP/7/10, 32/64-bit Linux and 64-bit MacOS	
Compatibility	GigE Vision	
Certification	CE, FCC, RoHS, KC	



Germany, Austria, Switzerland
 Sedeco Imaging GmbH
 Unterer Dammweg 12
 76149 Karlsruhe
 Germany
 T. +49 721 5604 7980
 info@sedeco-imaging.com

BeNeLux
 Sedeco Imaging B.V.
 Trasmolenlaan 12
 3447 GZ Woerden
 the Netherlands
 T. +31 348 749110
 info@sedeco-imaging.nl

www.sedeco-imaging.com