

## MV-CA013-20GN

1.3 MP 1/2" CMOS Near-Infrared GigE Area Scan Camera

### Introduction

MV-CA013-20GN adopts PYTHON1300 CMOS sensor and provides high quality image. The GigE interface provides high-speed real-time transmission of uncompressed data with the maximum frame rate reaching 90 fps at full resolution.



**GEN<i>i>CAM**

**GigE**  
VISION

### Key Feature

- Adopts GigE interface and max. transmission distance of 100 meters without relay
- Supports auto and manual adjustment for exposure control, LUT, Gamma correction, etc.
- Supports hardware triggering and software triggering
- Supports auto white balance and better color correction with excellent image interpolation algorithm
- Up to 128 MB local memory for burst transmission and retransmission
- Compatible with GigE Vision Protocol V1.2 and third-party software meeting with GigE Vision Protocol

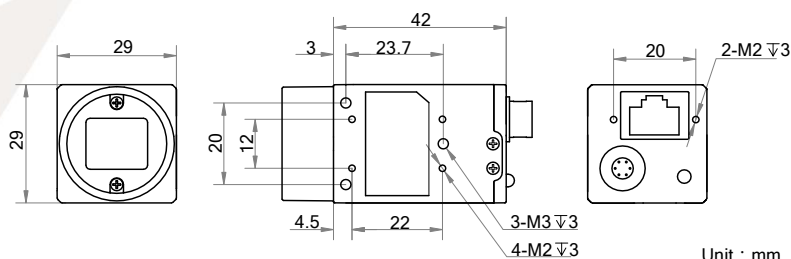
### Applicable Industry

Electronic semiconductor, factory automation, and quality inspection.

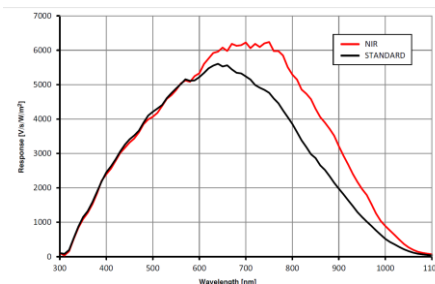
### Available Model

Near-Infrared: MV-CA013-20GN

### Dimension



### Sensor Quantum Efficiency



## Specification

<b>Model</b>	<b>MV-CA013-20GN</b>
<b>Camera</b>	
<b>Sensor type</b>	CMOS, global shutter
<b>Sensor model</b>	PYTHON1300
<b>Pixel size</b>	4.8 μm x 4.8 μm
<b>Sensor size</b>	1/2"
<b>Resolution</b>	1280 × 1024
<b>Frame rate</b>	90 fps
<b>Dynamic range</b>	59.6 dB
<b>SNR</b>	39.8 dB
<b>Gain</b>	0 dB to 15 dB
<b>Exposure time</b>	38 μs to 10 s
<b>Shutter mode</b>	Off/Once/Continuous exposure mode
<b>Pixel format</b>	Mono 8/10/10p/12/12p
<b>Reverse image</b>	Supports horizontal and vertical reverse image output
<b>Image buffer</b>	128 MB
<b>Electrical features</b>	
<b>Data interface</b>	Gigabit Ethernet
<b>Digital I/O</b>	Opto-isolated input x 1, Opto-isolated output x 1, Bi-directional non-isolated I/O x 1
<b>Power supply</b>	5 VDC to 15 VDC, supports PoE power supply
<b>Power consumption</b>	< 2.6 W@12 VDC
<b>Structure</b>	
<b>Lens mount</b>	C-Mount
<b>Dimension</b>	29 mm × 29 mm × 42 mm (1.1" × 1.1" × 1.7")
<b>Weight</b>	< 68 g (0.15 lb.)
<b>Ingress protection</b>	IP30 (under proper lens installation and wiring)
<b>Temperature</b>	Working temperature: 0 °C to 50 °C (32 °F to 122 °F) Storage temperature: -30 °C to 70 °C (-22 °F to 158 °F)
<b>Humidity</b>	20% to 80% RH, without condensation
<b>General</b>	
<b>Client software</b>	MVS or third-party software meeting with GigE Vision Protocol
<b>Operation system</b>	32/64-bit Windows XP/7/10, 32/64-bit Linux and 64-bit MacOS
<b>Compatibility</b>	GigE Vision
<b>Certifications</b>	CE, FCC, RoHS, KC



**Germany, Austria, Switzerland**

Sedeco Imaging GmbH  
 Unterer Dammweg 12  
 76149 Karlsruhe  
 Germany  
 T. +49 721 5604 7980  
 info@sedeco-imaging.com

**BeNeLux**

Sedeco Imaging B.V.  
 Trasmolenlaan 12  
 3447 GZ Woerden  
 the Netherlands  
 T. +31 348 749110  
 info@sedeco-imaging.nl

[www.sedeco-imaging.com](http://www.sedeco-imaging.com)