

MV-CA005-20GM/GC

0.5 MP 1/3.6" CMOS GigE Area Scan Camera

Introduction

MV-CA005-20GM/GC adopts PYTHON480 sensor to provide high quality image. The GigE interface provides high-speed real-time transmission of uncompressed data with the maximum frame rate reaching 116 fps at full resolution.



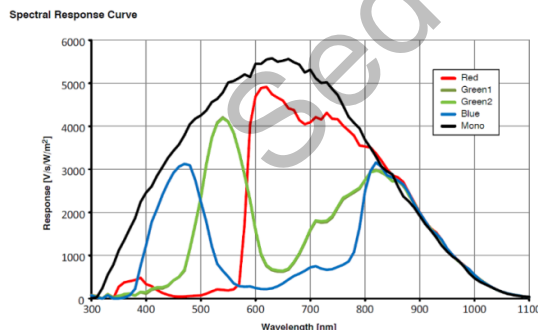
GEN*i*CAM

GIGEVISION

Key Feature

- Adopts GigE interface and max. transmission distance of 100 meters without relay
- Supports hardware triggering and software triggering
- Supports auto white balance and better color correction with excellent image interpolation algorithm
- Supports auto and manual adjustment for exposure control, LUT, Gamma correction, and etc.
- Up to 128 MB local memory for burst transmission and retransmission
- Compatible with GigE Vision Protocol V1.2 and third-party software meeting with GigE Vision Protocol

Sensor Quantum Efficiency



MV-CA005-20GM/GC

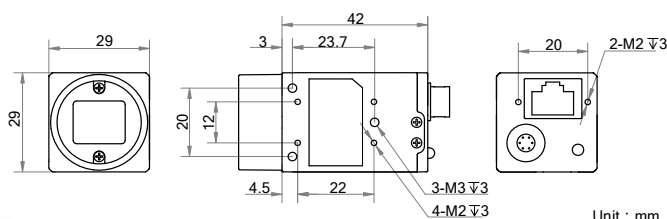
Available Model

- Mono camera: MV-CA005-20GM
- Color camera: MV-CA005-20GC

Applicable Industry

Electronic semiconductor, factory automation, and quality inspection.

Dimension



Specification

Model	MV-CA005-20GM	MV-CA005-20GC
Camera		
Sensor type	CMOS, global shutter	
Sensor model	PYTHON480	
Pixel size	4.8 μm x 4.8 μm	
Sensor size	1/3.6"	
Resolution	808 × 608	
Frame rate	116 fps	
Dynamic range	57 dB	
SNR	39 dB	
Gain	0 dB to 10 dB	
Exposure time	42 μs to 10 s	
Shutter mode	Off/Once/Continuous exposure mode	
Mono/color	Mono	Color
Pixel format	Mono 8/10/10p/12/12p	Mono 8/10/12, Bayer RG 8/10/10p/12/12p, YUV 422 Packed, YUV422_YUYV_Packed, RGB8
Reverse image	Supports horizontal and vertical reverse image output	
Image buffer	128 MB	
Electrical features		
Data interface	Gigabit Ethernet	
Digital I/O	Opto-isolated input x 1, Opto-isolated output x 1, Bi-directional non-isolated I/O x 1	
Power supply	5 VDC to 15 VDC, supports PoE power supply	
Power consumption	Approx. 3.0 W@12 VDC	
Structure		
Lens mount	C-Mount	
Dimension	29 mm × 29 mm × 42 mm (1.1" × 1.1" × 1.7")	
Weight	Approx. 68 g (0.15 lb.)	
Ingress protection	IP30 (under proper lens installation and wiring)	
Temperature	Working temperature: 0 °C to 50 °C (32 °F to 122 °F) Storage temperature: -30 °C to 70 °C (-22 °F to 158 °F)	
Humidity	20% to 80% RH, without condensation	
General		
Client software	MVS or third-party software meeting with GigE Vision Protocol	
Operation system	32/64-bit Windows XP/7/10, 32/64-bit Linux and 64-bit MacOS	
Compatibility	GigE Vision	
Certifications	CE, FCC, RoHS, KC	

SEDECO
IMAGING

Germany, Austria, Switzerland

Sedeco Imaging GmbH
Unterer Dammweg 12
76149 Karlsruhe
Germany
T. +49 721 5604 7980
info@sedeco-imaging.com

BeNeLux

Sedeco Imaging B.V.
Trasmolenlaan 12
3447 GZ Woerden
the Netherlands
T. +31 348 749110
info@sedeco-imaging.nl

www.sedeco-imaging.com