

MV-CB120-10UM/UC-C

12 MP 1/1.7" CMOS USB3.0 Board Level Camera

Introduction

MV-CB120-10UM/UC-C camera adopts Sony IMX 226 chip and provides high quality image. It adopts C-mount and is small in size which can meet different spatial requirements.

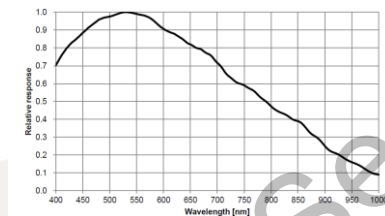


GEN<i>i>CAM **USB**
VISION

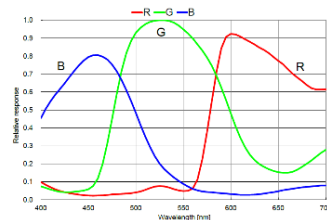
Key Feature

- Single board design for flexible installation
- Supports auto and manual adjustment for gain, exposure control, white balance, LUT, Gamma correction, and etc
- Adopts image interpolation algorithm for color camera to have better color correction
- Power supply and data transmission via USB3.0 interface
- Compatible with USB3 Vision Protocol, GenlCam standard, and the third-party software based on these protocol and standard.

Sensor Quantum Efficiency



MV-CB120-10UM-C



MV-CB120-10UC-C

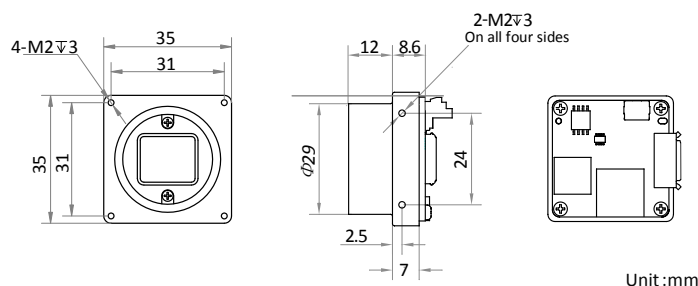
Applicable Industry

Electronic semiconductor, factory automation, logistics, liquor and beverage, medicine packing and etc.

Available Model

- Mono Camera: MV-CB120-10UM-C
- Color Camera: MV-CB120-10UC-C

Dimension



Specification

Model	MV-CB120-10UM-C	MV-CB120-10UC-C
Parameters	12 MP 1/1.7" CMOS USB3.0 Board Level Camera	
Camera		
Sensor type	CMOS, rolling shutter	
Sensor model	Sony IMX226	
Pixel size	1.85 μm \times 1.85 μm	
Sensor size	1/1.7"	
Resolution	4032 \times 3036	
Frame rate	28 fps	21 fps
Dynamic range	65 dB	
SNR	40 dB	
Gain	0 dB to 20 dB	
Exposure time	11 μs to 2 s	23 μs to 2 s
Shutter mode	Off/ Once /Continuous exposure mode	
Mono/Color	Mono	Color
Pixel format	Mono 8/10/10p/12/12p	Mono8/10/12, Bayer RG 8/10/10p/12/12p YUV 422 Packed, YUV422_YUYV_Packed, RGB8
Acquisition mode	Continuous mode, single frame mode	
Binning	Not support	
Decimation	1 \times 1, 1 \times 2, 2 \times 1, 2 \times 2	Not support
Reverse image	Supports horizontal and vertical reverse image output	
Electrical features		
Data interface	USB3.0, USB2.0	
Digital I/O	Bi-directional non-isolated I/O \times 2 (Line1, Line2)	
Power supply	USB3.0 power supply	
Power consumption	< 2.45 W@5 VDC	
Structure		
Dimension	35 mm \times 35 mm \times 8.6 mm (1.4" \times 1.4" \times 0.3")	
Weight	Approx. 30 g (0.07 lb)	
Temperature	Working temperature: 0 $^{\circ}\text{C}$ to 50 $^{\circ}\text{C}$ (32 $^{\circ}\text{F}$ to 122 $^{\circ}\text{F}$) Storage temperature: -30 $^{\circ}\text{C}$ to 70 $^{\circ}\text{C}$ (-22 $^{\circ}\text{F}$ to 158 $^{\circ}\text{F}$)	
Humidity	20% to 80% RH, without condensation	
General		
Client software	MVS or third-party software with USB3 Vision Protocol	
Operating system	Windows XP/7/10 32/64bits, Linux 32/64bits or MacOS 64bits	
Compatibility	USB3 Vision, GenICam	
Certification	CE, FCC, RoHS	

Germany, Austria, Switzerland Sedeco Imaging GmbH Unterer Dammweg 12 76149 Karlsruhe Germany T. +49 721 5604 7980 info@sedeco-imaging.com	BeNeLux Sedeco Imaging B.V. Trasmolenlaan 12 3447 GZ Woerden the Netherlands T. +31 348 749110 info@sedeco-imaging.nl
--	--

www.sedeco-imaging.com