

## MV-CB120-10UM/UC-B

12 MP 1/1.7" CMOS USB3.0 Board Level Camera

### Introduction

MV-CB120-10UM/UC-B camera adopts Sony IMX 226 chip and provides high quality image. It adopts compact design and is small in size which can meet different spatial requirements.

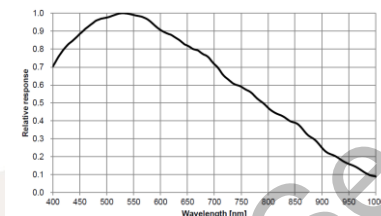


**GEN*i*CAM** **USB<sup>TM</sup>**  
VISION

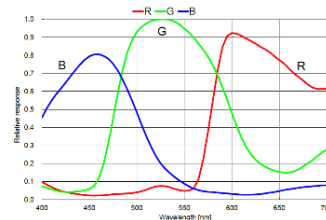
### Key Feature

- Single board design for flexible installation
- Supports auto and manual adjustment for gain, exposure control, white balance, LUT, Gamma correction, and etc
- Adopts image interpolation algorithm for color camera to have better color correction
- Power supply and data transmission via USB3.0 interface
- Compatible with USB3 Vision Protocol, GenICam standard, and the third-party software based on these protocol and standard.

### Sensor Quantum Efficiency



MV-CB120-10UM-B



MV-CB120-10UC-B

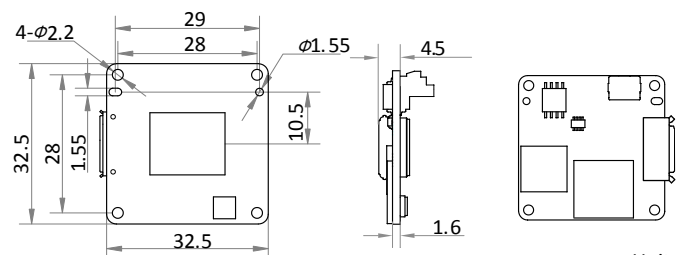
### Applicable Industry

Electronic semiconductor, factory automation, logistics, liquor and beverage, medicine packing and etc.

### Available Model

- Mono Camera: MV-CB120-10UM-B
- Color Camera: MV-CB120-10UC-B

### Dimension



Unit:mm



## Specification

Model	MV-CB120-10UM-B	MV-CB120-10UC-B
Parameters	12 MP 1/1.7" CMOS USB3.0 Board Level Camera	
<b>Camera</b>		
Sensor type	CMOS, rolling shutter	
Sensor model	Sony IMX226	
Pixel size	1.85 $\mu\text{m}$ $\times$ 1.85 $\mu\text{m}$	
Sensor size	1/1.7"	
Resolution	4032 $\times$ 3036	
Frame rate	28 fps	21 fps
Dynamic range	65 dB	
SNR	40 dB	
Gain	0 dB to 20 dB	
Exposure time	11 $\mu\text{s}$ to 2 s	23 $\mu\text{s}$ to 2 s
Shutter mode	Off/ Once /Continuous exposure mode	
Mono/Color	Mono	Color
Pixel format	Mono 8/10/10p/12/12p	Mono8/10/12, Bayer RG 8/10/10p/12/12p YUV 422 Packed, YUV422_YUYV_Packed, RGB8
Acquisition mode	Continuous mode, single frame mode	
Binning	Not support	
Decimation	1 $\times$ 1, 1 $\times$ 2, 2 $\times$ 1, 2 $\times$ 2	Not support
Reverse image	Supports horizontal and vertical reverse image output	
<b>Electrical features</b>		
Data interface	USB3.0, USB2.0	
Digital I/O	Bi-directional non-isolated I/O $\times$ 2 (Line1, Line2)	
Power supply	USB3.0 power supply	
Power consumption	< 2.45 W@5 VDC	
<b>Structure</b>		
Dimension	32.5 mm $\times$ 32.5 mm $\times$ 4.5 mm (0.07" $\times$ 0.07" $\times$ 0.01")	
Weight	Approx. 10 g (0.02lb)	
Temperature	Working temperature: 0 $^{\circ}\text{C}$ to 50 $^{\circ}\text{C}$ (32 $^{\circ}\text{F}$ to 122 $^{\circ}\text{F}$ ) Storage temperature: -30 $^{\circ}\text{C}$ to 70 $^{\circ}\text{C}$ (-22 $^{\circ}\text{F}$ to 158 $^{\circ}\text{F}$ )	
Humidity	20% to 80% RH, without condensation	
<b>General</b>		
Client software	MVS or third-party software with USB3 Vision Protocol	
Operating system	Windows XP/7/10 32/64bits, Linux 32/64bits or MacOS 64bits	
Compatibility	USB3 Vision, GenICam	
Certification	CE, FCC, RoHS	



Germany, Austria, Switzerland  
 Sedeco Imaging GmbH  
 Unterer Dammweg 12  
 76149 Karlsruhe  
 Germany  
 T. +49 721 5604 7980  
 info@sedeco-imaging.com

BeNeLux  
 Sedeco Imaging B.V.  
 Trasmolenlaan 12  
 3447 CZ Woerden  
 the Netherlands  
 T. +31 348 749110  
 info@sedeco-imaging.nl

[www.sedeco-imaging.com](http://www.sedeco-imaging.com)