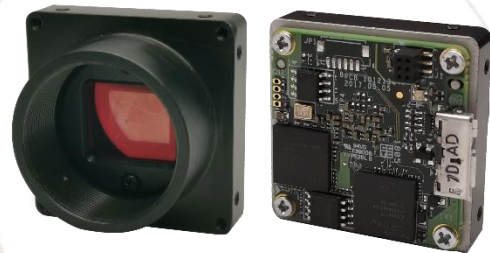


MV-CB060-10UM/UC-C

6 MP 1/1.8" CMOS USB3.0 Board Level Camera

Introduction

MV-CB060-10UM/UC-C camera adopts Sony IMX178 sensor to provide high-quality image. It adopts C-mount and is small in size, which can meet different spatial requirements.



GEN<i>i>CAM

USB
VISION

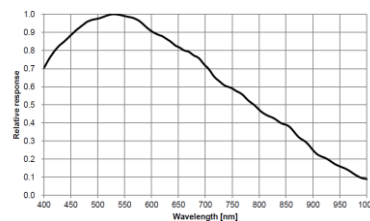
Key Feature

- Single board design for flexible installation
- Supports auto and manual adjustment for gain, exposure control, white balance, LUT, Gamma correction, etc
- Adopts image interpolation algorithm for color camera to have better color correction
- Power supply and data transmission via USB3.0 interface
- Compatible with USB3 Vision Protocol, GenIcam standard, and the third-party software based on these protocol and standard

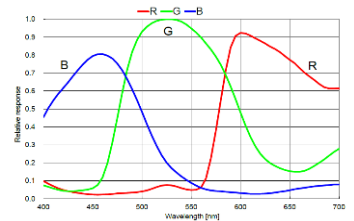
Available Model

- Mono camera: MV-CB060-10UM-C
- Color camera: MV-CB060-10UC-C

Sensor Quantum Efficiency



MV-CB060-10UM-C

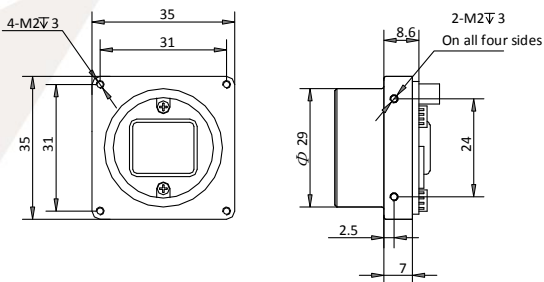


MV-CB060-10UC-C

Applicable Industry

Electronic semiconductor, factory automation, logistics, liquor and beverage, medicine packing, etc.

Dimension



Specification

Model	MV-CB060-10UM-C	MV-CB060-10UC-C
Camera		
Sensor type	CMOS, rolling shutter	
Sensor model	Sony IMX178	
Pixel size	2.4 μm \times 2.4 μm	
Sensor size	1/1.8"	
Resolution	3072 \times 2048	
Frame rate	17 fps	29 fps
Dynamic range	71.3 dB	
SNR	41.3 dB	
Gain	0 dB to 20 dB	
Exposure time	27 μs to 2.5 s	24 μs to 2.5 s
Shutter mode	Supports Off/ Once/ Continuous exposure mode	
Mono/color	Mono	Color
Pixel format	Mono 8/10/10p/12/12p	Mono8/10/12, Bayer RG 8/10/10p/12/12p YUV422Packed, YUV422_YUYV_Packed, RGB8
Acquisition mode	Continuous mode and SingleFrame mode	
Binning	Supports 2 \times 2	
Decimation	Not support	
Reverse image	Supports horizontal reverse image output	
Electrical features		
Data interface	USB3.0	
Digital I/O	Bi-directional non-isolated I/O \times 2 (Line 1, Line 2)	
Power supply	USB3.0 power supply	
Power consumption	< 1.5 W@5 VDC	
Structure		
Lens mount	C-Mount	
Dimension	35 mm \times 35 mm \times 8.6 mm (1.4" \times 1.4" \times 0.3")	
Weight	Approx. 30 g (0.07 lb.)	
Temperature	Working temperature: 0 $^{\circ}\text{C}$ to 50 $^{\circ}\text{C}$ (32 $^{\circ}\text{F}$ to 122 $^{\circ}\text{F}$) Storage temperature: -30 $^{\circ}\text{C}$ to 70 $^{\circ}\text{C}$ (-22 $^{\circ}\text{F}$ to 158 $^{\circ}\text{F}$)	
Humidity	20% to 80% RH, without condensation	
General		
Client software	MVS or third-party software meeting with USB3 Vision Protocol	
Operating system	32/64-bit Windows XP/7/10, 32/64-bit Linux	
Compatibility	USB3 Vision, GenICam	
Certification	CE, FCC, RoHS, KC	

SEDECO
IMAGING

Germany, Austria, Switzerland
 Sedeco Imaging GmbH
 Unterer Dammweg 12
 76149 Karlsruhe
 Germany
 T. +49 721 5604 7980
 info@sedeco-imaging.com

BeNeLux
 Sedeco Imaging B.V.
 Trasmolenlaan 12
 3447 GZ Woerden
 the Netherlands
 T. +31 348 749110
 info@sedeco-imaging.nl

www.sedeco-imaging.com