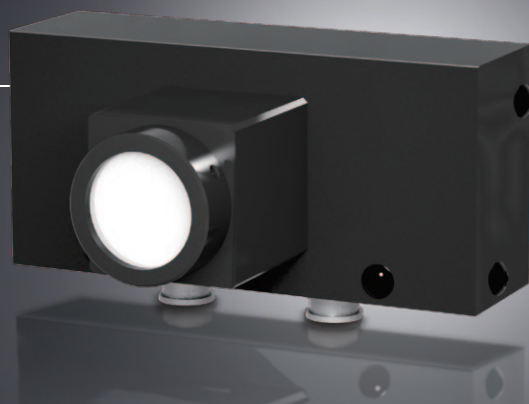


Inkjet Droplet Observation Light Source

ISU series

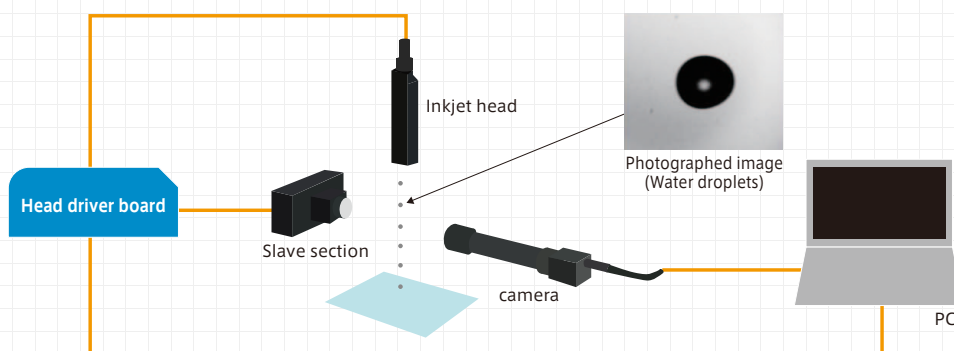
Nano-second emission makes it possible to image the flight state of even one droplet of inkjet.



Special Optical Design

Power LEDs*

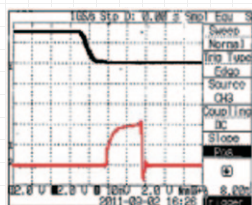
Structure



Compatible with one to multiple head nozzles. Up to 18 units can be controlled.

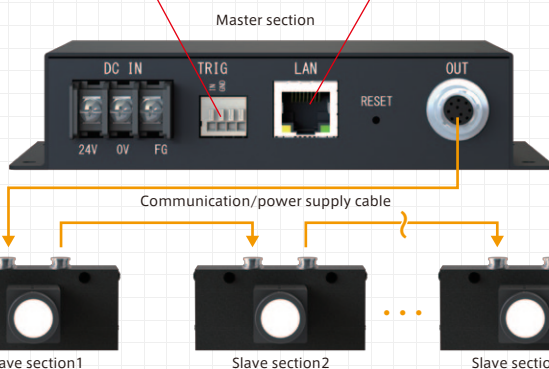
Trigger signal

150nsec responsiveness before the start of lighting
250nsec responsiveness before stabilization



Adopted the power LED

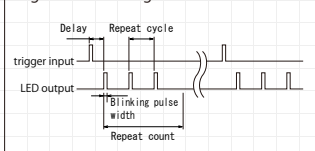
Min. 100nsec
Light is emitted by high-speed overdrive lighting (max. 1 μsec).
Image of even one liquid droplet can be photographed.



Other function

The delay (0 to 5 ms) and repeated lighting (1 to 100 times/trigger) functions are mounted as standard, which enables observation in various occasions.

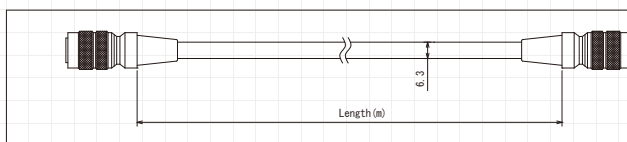
Light Control Image



Slave section

One master is capable of controlling 18unit slaves at maximum.

Master/slave connection cable

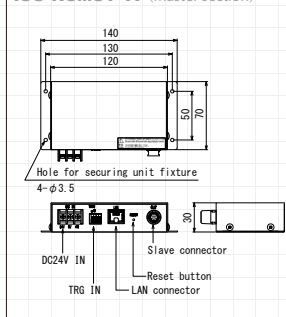


Model	Length(m)
IC-NSS4-1	1
IC-NSS4-2	2
IC-NSS4-3	3
IC-NSS4-4	4
IC-NSS4-5	5

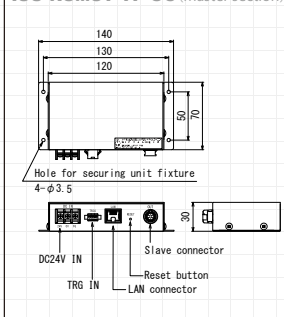
Item	Type
Model	Master section: ISU-NSMST-TP (TTL) Master section: ISU-NSMST-TP-OC (Open collector) Slave section: ISU-NSSL-LX30AW
Light Control System	Voltage variable (256 levels)
Input Voltage	DC24V 4A (MAX)
Output Voltage	3A (MAX) / 1unit
Light Color	White
No. of slave units	Max. of 18 units/master unit
External trigger	TTL/Open collector
External trigger interlock	Duty: 5% or less
No. of repeat times for LED lighting	1 to 100 times/trigger
Lighting Cycle	2~20 μs (1 μs step)
Width	100ns~1 μs (100 ns-step)**
Delay	0~5ms (1 μs step)

**Less than 200ns might becomes unstable

ISU-NSMST-TP (Master section)



ISU-NSMST-TP-OC (Master section)



ISU-NSSL-LX30AW (Slave section)

