

Ring Light

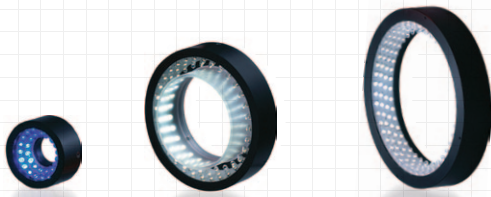
Low-angle Direct Ring Light

IDR-LA series

Suitable for edge detection and scratch inspection



DC 24V Models Available



Model	Light Color	Power Consumption (W)	Input Voltage	SAG (*)	Power Supply	Drawing	
IDR-LA40/15□-2	DR	2.1	DC12V	D9	ILP-30M2 (P.69) IDGB series (P.67) other, overdrive power supply etc.	1	
	DW B G	2.2		FF			
IDR-LA50/24□-2-C01	DR	3		C7			2
	DW B G	2.9		FF			
IDR-LA74/48□	DR	5.4		C8			3
	DW B G	5.4		FF			
IDR-LA100/68□-3	DR	7		FF			4
	DW B G	5.4		FF			
IDR-LA120/70□-3	DR	10.5		F3			5
	DW B G	6.9		FF			
IDR-LA140/108□-3	DR	11.9		F4			6
	DW B G	8		FF			
IDR-LA200/170□-3	DR	23.4		D0			7
	DW B G	18.9		FF			

□ represents light color (DR=Red, DW=White, B=Blue, G=Green)

*Optional diffusing ring can be mounted.

Excludes LA40/15.

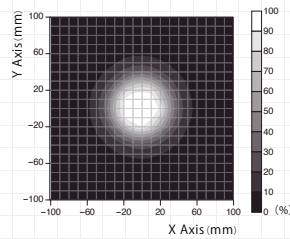
*Input voltage is DC 12V, but DC 24V models are also available.

*See page 60 for DC 24V models.

*Sizes other than those above are also available.

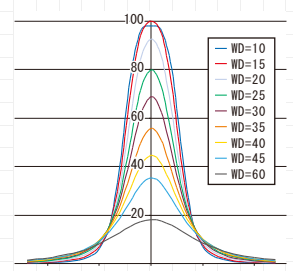
*The SAG value indicates the maximum voltage setting for SAG power supplies. For details, see page 75.

Luminance Distribution Chart (Reference Values)

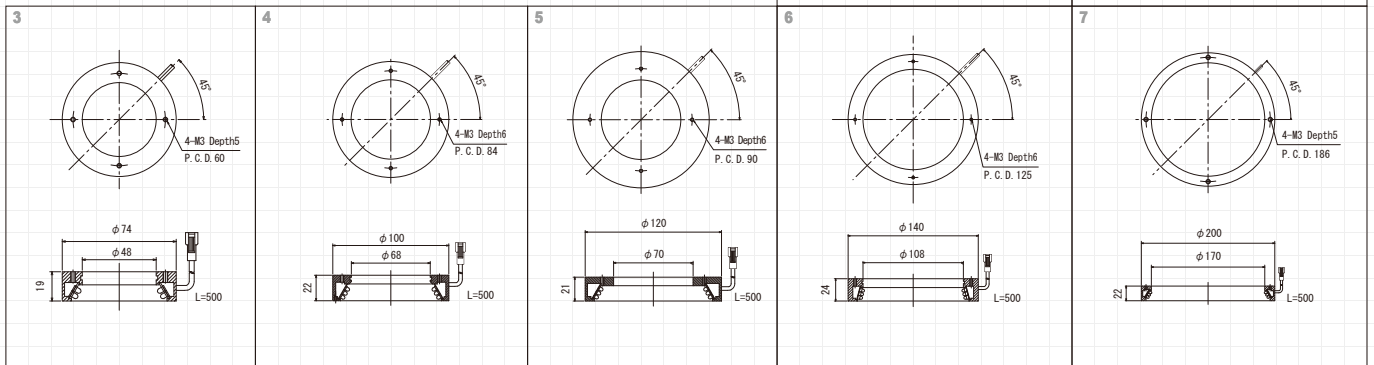


A wide area can be illuminated uniformly even at a distance close to the workpiece surface.

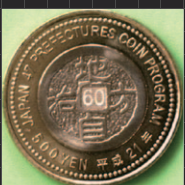
Measurement model:
IDR-LA100/68DW-3 WD:20mm



Illuminating the subject from a working distance (WD) of 20 to 40 mm is optimum.
Measurement model: IDR-LA100/68DW-3



Effect Subject defects and outer edges can be detected by low-angle illumination from the periphery.



IDR-90/50B

IDR-LA100/68B-3

LIGHTING STRUCTURE

