

Ring Light

# Multi-position Ring Light

## IMAR series

Highly versatile with variable illumination distance

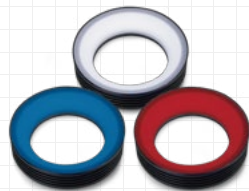


IP67 standard-compliant dust & water proof model is available.

DC 24V Models Available

### Standard Type

Model	Light Color	Power Consumption (W)	Input Voltage	SAG (*)	Power Supply	Drawing
IMAR-55□	AR	4.5	DC12V	95	ILP-30M2 (P.69) IDGB series (P.67) other, overdrive power supply etc.	1
	W	4.5		C2		
	B	4.5		C5		
IMAR-80□	AR	8.5		7F		2
	W	8		AC		
	B	8		AE		
IMAR-110□	AR	12		87		3
	W	13.5		AC		
	B	13.5		AE		
IMAR-130□	AR	14.5		80		4
	W	16		A6		
	B	16		A9		
IMAR-200□	AR	24	7E	5		
	W	24	AA			
	B	24	B2			



### Dust & Waterproof specification (IP67 standard-compliant)

Model	Light Color	Power Consumption (W)	Input Voltage	SAG (*)	Power Supply	Drawing
IMAR-90□-WP	AR	8.5	DC12V	7F	ILP-30M2 (P.69) IDGB series (P.67) other, overdrive power supply etc.	6
	W	8		AC		
	B	8		AE		
IMAR-140□-WP	AR	14.5		80		7
	W	16		A6		
	B	16		A9		

□ represents light color (AR=Red, W=White, B=Blue)

\*Input voltage is DC 12V, but DC 24V models are also available.

\*See page 60 for DC 24V models.

\*The SAG value indicates the maximum voltage setting for SAG power supplies. For details, see page 75.

### Functional Characteristics

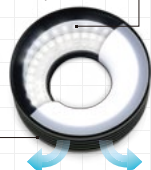
#### FEATURES

#### Dense concentration of high-intensity power LEDs

High-intensity power LEDs are mounted densely to provide extremely bright, more even ring lighting. A special diffusing plate makes it possible to project diffuse light unaffected by ghost images produced by LED elements.

#### Heat-dissipating fins

An original heat-dissipating structure provides drastically improved heat dissipation.

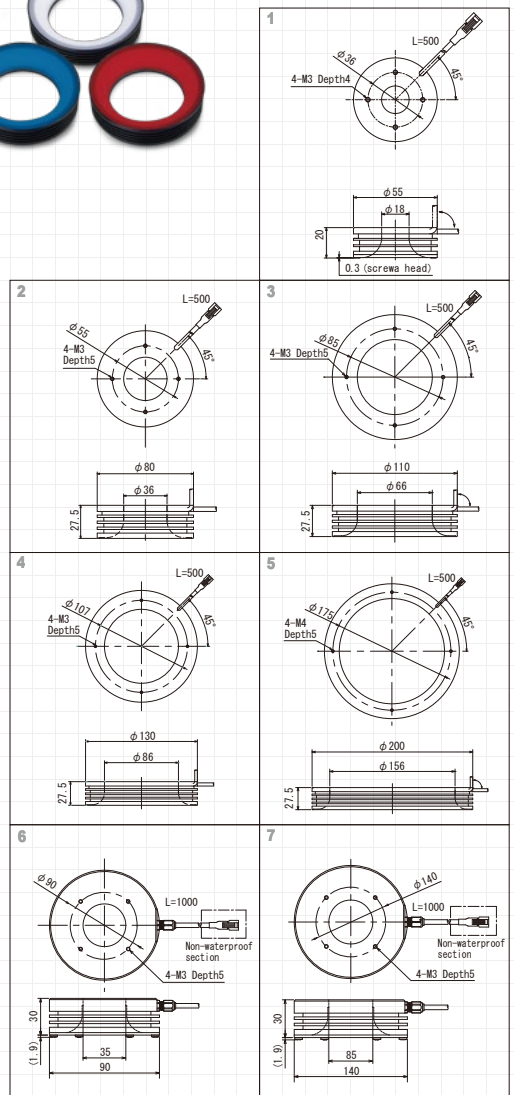
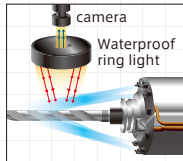


### International Protection code

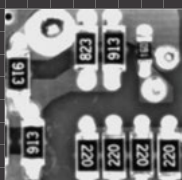
'6' for the first digit of the protection code indicates the degree of protection from the following:

- Dust-tight
- '7' for the second digit of the protection code indicates the degree of protection from the following:

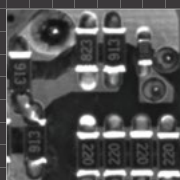
- Protection against effect of immersion in water under defined conditions of pressure and time
- The device (with a height less than 850 mm) can be located 1,000 mm below the surface of the water for 30 minutes consecutively



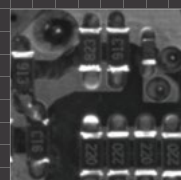
Effect → Lighting effects are altered by changing lighting height. Light used:IMAR-80W



WD=20mm  
Printing clearly emphasized



WD=60mm  
Wiring pattern and electrodes emphasized



WD=100mm  
Only electrodes emphasized

### LIGHTING STRUCTURE

