

Constant-current Light Control Power Supply for IDBB-LSRH

IMC series

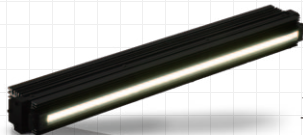
Capable of 1,000-level light control in 100 mm increments
You can adjust the uniformity in the lighting side.



·Power supply for IDBB-LSRH line sensor lighting
·Since it's a constant current control power supply, it's suited for a line sensor camera and a high-speed shutter camera.

Model	IMC-300M10-TP	IMC-600M20-TP	IMC-1000M30-TP
Input Voltage	AC100~240V		
Operating Frequency	50/60Hz		
Capacity	30W/CH		
Output Channel	10CH	20CH	30CH
Light Control Method	Variable Output Current System		
External Control	External light control cable (LAN communication) External ON/OFF control		
Applicable size	100~1000	1100~2000	2100~3000
Drawing	1	2	3

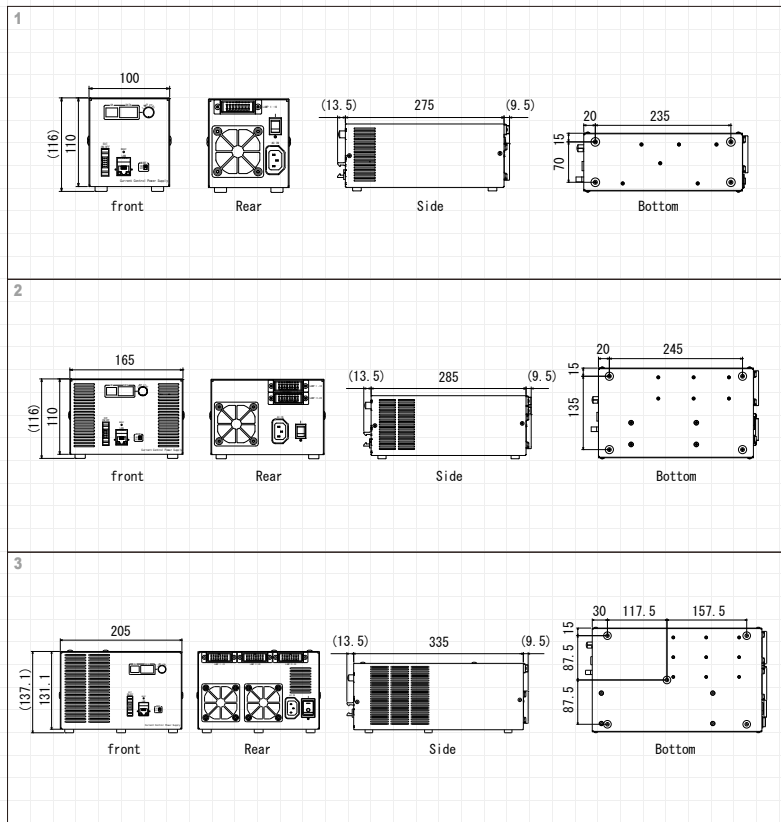
Supported Lights



1,000,000 lx Natural Air Cooling Type Line Light
IDBB-LSRH series (P.12)

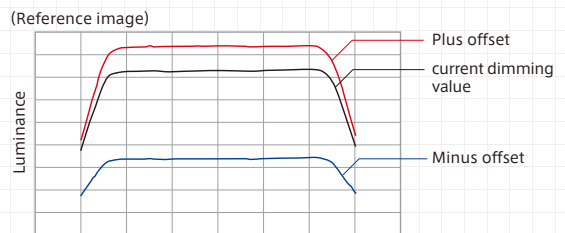
Connecting cable

Model	Length(m)
I-CB-S1-HDN	1
I-CB-S2-HDN	2
I-CB-S3-HDN	3
I-CB-S5-HDN	5
I-CB-S7-HDN	7
I-CB-S10-HDN	10

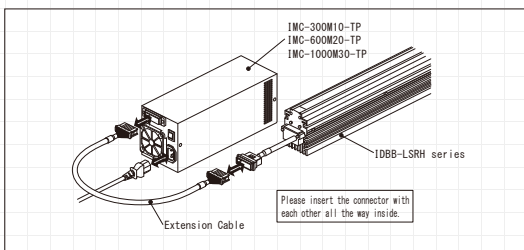


For offset dimming

Offset means that the increase or decrease the light control value while holding the light control balance with the current setting of each CH. It's able to light control while holding the light control balance by using this function.



Configuration example



External ON/OFF cable

Control cable for outputting external ON/OFF signal and error status signal.

Model	Length(m)
IC-MIL-10-1	1
IC-MIL-10-2	2
IC-MIL-10-3	3
IC-MIL-10-5	5
IC-MIL-10-10	10

