

# Dome Light

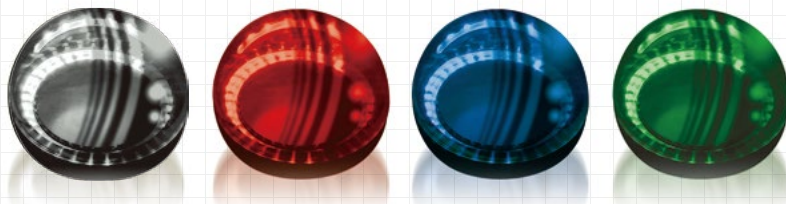
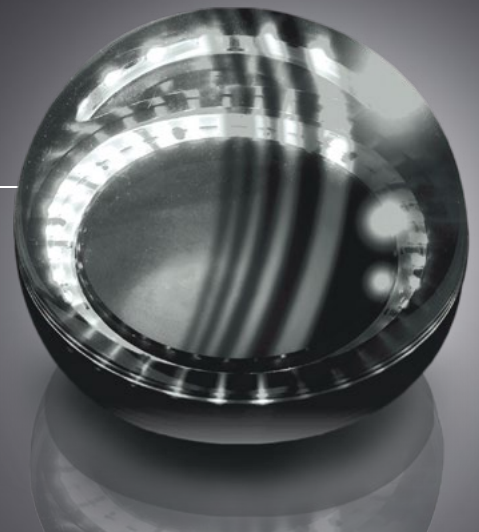
## Magic Dome Light

### IMDH-180 series

Dome light without camera hole

A single light enables simultaneous photography with multiple cameras.

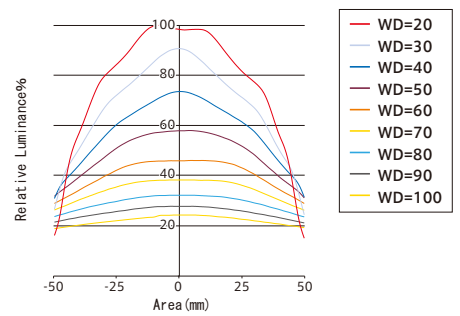
- Patent registered
- Special Optical Design
- Power LEDs



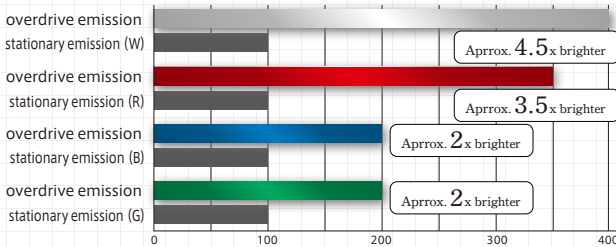
Model	Light Color	Power Consumption (W)	Input Voltage	SAG (*)	Power Supply
IMDH-180□D	W	16	DC12V	CB	ILP-30M2 (P.69) IDGB series (P.67) other, overdrive power supply, etc.
	R	16		F8	
	B	16		8A	
	G	16		80	

\*□ represents light color (W=White, R=Red, B=Blue, G=Green)  
\*The SAG value indicates the maximum voltage setting for SAG power supplies. For details, see page 75.

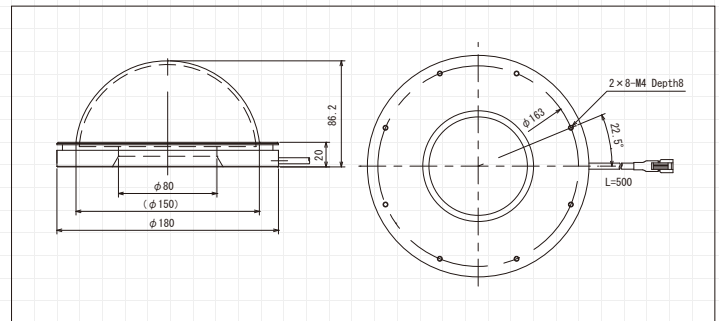
#### Luminance Distribution Chart (Reference Values)



#### Comparison of brightness (Reference Values)



\* For overdrive power supply, please refer to P74, P75.



Light turned off



When the light is turned on, it is possible to see parts of the dome that were not visible.



Light turned on

**Effect** Ideal for visual inspection and defect inspection of inner surfaces of bottle caps and similar applications. Light used: IMDH-180W



It is recommended that the distance between the lens and dome is less than 5 mm in order to reduce reflections caused by ambient light. Shield the ambient light to ensure a head clearance inside the dome.

#### LIGHTING STRUCTURE

