

## MV-CE050-30UC

5.0 MP 1/2.5" CMOS USB3.0 Area Scan Camera

### Introduction

MV-CE050-30UC camera adopts Aptina AR0521 sensor to provide high-quality image. It uses USB3.0 interface to transmit non-compressed images in real time with max. frame rate reaching 31 fps.



**GEN<i>i>CAM**

**USB**  
VISION

### Key Feature

- Supports auto and manual adjustment for gain, exposure control, white balance, LUT, Gamma correction, etc.
- Supports hardware triggering, software triggering, and free run mode
- Adopts M2 screw holes for securing cable that connects USB3.0 interface
- Compatible with USB3 Vision Protocol, GenICam Standard, and the third-party software based on these protocol and standard

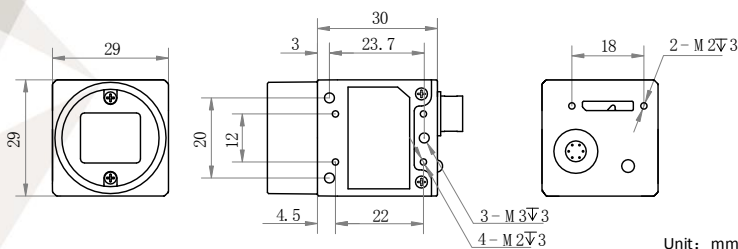
### Available Model

Color camera: MV-CE050-30UC

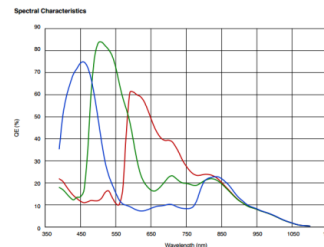
### Applicable Industry

Electronic semiconductor, factory automation, liquor and beverage, medicine packing, etc.

### Dimension



### Sensor Quantum Efficiency



## Specification

<b>Model</b>	<b>MV-CE050-30UC</b>
<b>Camera</b>	
<b>Sensor type</b>	CMOS, rolling shutter
<b>Sensor model</b>	Aptina AR0521
<b>Pixel size</b>	2.2 $\mu\text{m}$ $\times$ 2.2 $\mu\text{m}$
<b>Sensor size</b>	1/2.5"
<b>Resolution</b>	2592 $\times$ 1944
<b>Frame rate</b>	31 fps
<b>Dynamic range</b>	60 dB
<b>SNR</b>	40 dB
<b>Gain</b>	0 dB to 15 dB
<b>Exposure time</b>	Bayer format: 16 $\mu\text{s}$ to 1 s, other formats: 28 $\mu\text{s}$ to 1 s
<b>Shutter mode</b>	Off/Once/Continuous exposure mode
<b>Mono/color</b>	Color
<b>Pixel format</b>	Mono 8/10/12, Bayer GR 8/10/10p/12/12p, YUV 422 Packed, YUV422_YUYV_Packed, RGB 8
<b>Acquisition mode</b>	Continuous mode and SingleFrame mode
<b>Binning</b>	Not support
<b>Decimation</b>	Supports 1 $\times$ 2, 1 $\times$ 4, 2 $\times$ 1, 2 $\times$ 2, 2 $\times$ 4, 4 $\times$ 1, 4 $\times$ 2, 4 $\times$ 4
<b>Reverse image</b>	Supports horizontal and vertical reverse image output
<b>Image buffer</b>	128 MB
<b>Electrical features</b>	
<b>Data interface</b>	USB3.0
<b>Digital I/O</b>	6-pin Hirose connector provides power and I/O, including opto-isolated input x 1 (Line0), opto-isolated output x 1(Line1), bi-directional non-isolated I/O x 1 (Line2)
<b>Power supply</b>	5 VDC to 15 VDC, supports USB3.0 power supply
<b>Power consumption</b>	< 2.5 W @5 VDC
<b>Structure</b>	
<b>Lens mount</b>	C-Mount
<b>Dimension</b>	29 mm $\times$ 29 mm $\times$ 30 mm (1.1" $\times$ 1.1" $\times$ 1.2")
<b>Weight</b>	Approx. 56 g (0.12 lb.)
<b>Ingress protection</b>	IP30 (under correct lens installation and wiring)
<b>Temperature</b>	Working temperature: 0 $^{\circ}\text{C}$ to 50 $^{\circ}\text{C}$ (32 $^{\circ}\text{F}$ to 122 $^{\circ}\text{F}$ ) Storage temperature: -30 $^{\circ}\text{C}$ to 70 $^{\circ}\text{C}$ (-22 $^{\circ}\text{F}$ to 158 $^{\circ}\text{F}$ )
<b>Humidity</b>	20% to 80% RH, without condensation
<b>General</b>	
<b>Client software</b>	MVS or third-party software meeting with USB3 Vision Protocol
<b>Operation system</b>	32/64-bit Windows XP/7/10, 32/64-bit Linux
<b>Compatibility</b>	USB3 Vision, GenICam
<b>Certifications</b>	CE, FCC, RoHS, KC



<b>Germany, Austria, Switzerland</b> Sedeco Imaging GmbH Unterer Dammweg 12 76149 Karlsruhe Germany T. +49 721 5604 7980 info@sedeco-imaging.com	<b>BeNeLux</b> Sedeco Imaging B.V. Trasmolenlaan 12 3447 GZ Woerden the Netherlands T. +31 348 749110 info@sedeco-imaging.nl
--	--