

## MV-CE120-10GM/GC

12 MP 1/1.7" CMOS GigE Area Scan Camera

### Introduction

MV-CE120-10GM/GC camera adopts Sony IMX226 sensor to provide high-quality image. It uses GigE interface to transmit non-compressed images in real time with max. frame rate reaching 9.6 fps.



**GEN*i*CAM**

**GigE**  
VISION

### Key Feature

- Adopts GigE interface and max. transmission distance of 100 meters without relay
- Supports auto exposure control, LUT, Gamma correction, etc.
- Up to 128 MB local memory for burst transmission and retransmission
- Supports hardware triggering and software triggering
- Supports auto white balance and better color correction with excellent image interpolation algorithm
- Compatible with GigE Vision Protocol V2.0, GenCam Standard, and third-party software based on these protocol and standard

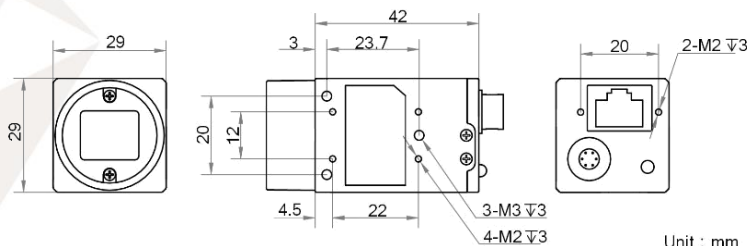
### Available Model

- Mono Camera: MV-CE120-10GM
- Color Camera: MV-CE120-10GC

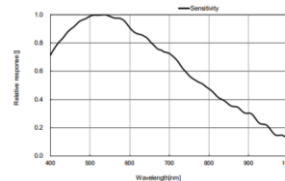
### Applicable Industry

Electronic semiconductor, factory automation, logistic code reading, medical packaging, etc.

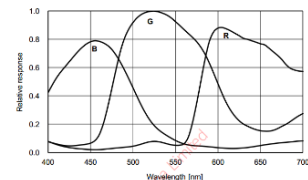
### Dimension



### Sensor Quantum Efficiency



MV-CE120-10GM



MV-CE120-10GC



## Specification

Model	MV-CE120-10GM	MV-CE120-10GC
<b>Camera</b>		
Sensor type	CMOS, rolling shutter	
Sensor model	Sony IMX226	
Pixel size	1.85 $\mu\text{m}$ $\times$ 1.85 $\mu\text{m}$	
Sensor size	1/1,7"	
Resolution	4024 $\times$ 3036	
Frame rate	9.6 fps	
Dynamic range	70.5 dB	
SNR	40.5 dB	
Gain	0 dB to 20 dB	
Exposure time	34 $\mu\text{s}$ to 2 s	
Shutter mode	Off/Once/Continuous exposure mode, supports Global Reset	
Mono/color	Mono	Color
Pixel format	Mono 8/10/10p/12/12p	Mono 8/10/12, Bayer GB 8/10/10p/12/12p, YUV422Packed, YUV422_YUYV_Packed, RGB 8, BGR 8
Acquisition mode	Continuous mode and SingleFrame mode	
Binning	Supports 2 $\times$ 2, 4 $\times$ 4	
Decimation	Not support	
Reverse image	Supports horizontal and vertical reverse image output	
Image buffer	128 MB	
<b>Electrical features</b>		
Data interface	Gigabit Ethernet	
Digital I/O	6-pin Hirose connector provides power and I/O, including opto-isolated input x 1 (Line0), opto-isolated output x 1 (Line1), bi-directional non-isolated I/O x 1 (Line2)	
Power supply	5 VDC to 15 VDC, supports PoE power supply	
Power consumption	< 3.24 W@12 VDC	
<b>Structure</b>		
Lens mount	C-Mount	
Dimension	29 mm $\times$ 29 mm $\times$ 42 mm (1.1" $\times$ 1.1" $\times$ 1.7")	
Weight	Approx. 68 g (0.15 lb.)	
Ingress protection	IP30 (under proper lens installation and wiring)	
Temperature	Working temperature: 0 $^{\circ}\text{C}$ to 50 $^{\circ}\text{C}$ (32 $^{\circ}\text{F}$ to 122 $^{\circ}\text{F}$ ) Storage temperature: -30 $^{\circ}\text{C}$ to 70 $^{\circ}\text{C}$ (-22 $^{\circ}\text{F}$ to 158 $^{\circ}\text{F}$ )	
Humidity	20% to 80% RH, without condensation	
<b>General</b>		
Client software	MVS or third-party software meeting with GigE Vision Protocol	
Operating system	32/64-bit Windows XP/7/10, 32/64-bit Linux and 64-bit MacOS	
Compatibility	GigE Vision V2.0, GenICam	
Certification	CE, FCC, RoHS, KC	



<p><b>Germany, Austria, Switzerland</b>          Sedeco Imaging GmbH          Unterer Dammweg 12          76149 Karlsruhe          Germany          T. +49 721 5604 7980          info@sedeco-imaging.com</p>	<p><b>BeNeLux</b>          Sedeco Imaging B.V.          Trasmolenlaan 12          3447 GZ Woerden          the Netherlands          T. +31 348 749110          info@sedeco-imaging.nl</p>
---	---

[www.sedeco-imaging.com](http://www.sedeco-imaging.com)