

MV-CE050-30GM

5 MP 1/2.5" CMOS GigE Area Scan Camera

Introduction

MV-CE050-30GM camera is a high quality device that can be used in a variety of applications, including electronic semiconductor fabrication, factory automation, quality inspection.



GEN<i>i</i>CAM

GigE
VISION

Key Feature

- Gigabit Ethernet interface providing 1 Gbps bandwidth; Transmitting distance can be 100 m without relaying
- 128MB on-board buffer, for image burst transmitting and retransmitting
- Supports auto exposure control, LUT and Gamma correction.
- Cameras can be synchronized with hard triggering and soft triggering
- Different exposure modes can be used to capture image
- Compatible with the third party software that supports GigE Vision V1.2

Recommended Accessories

- **Power:** 12 VDC @1A power adapter
- **NIC:** Intel Pro1000 or higher
- **Network Cable:** CAT5e or CAT6 network cable recommended

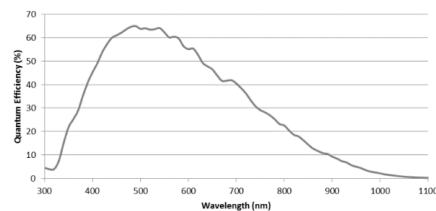
Available Model

- Mono: MV-CE050-30GM

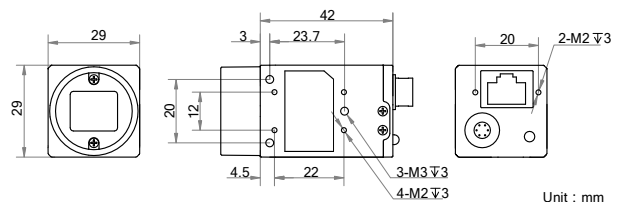
Applicable Industry

Electronic semiconductor, factory automation, quality inspection.

Sensor Quantum Efficiency



Dimension



Specification

Model	MV-CE050-30GM
Parameters	5 MP 1/2.5" CMOS GigE Area Scan Camera
Camera	
Sensor type	COMS, rolling shutter
Sensor model	MT9P031
Pixel size	2.2 μm \times 2.2 μm
Sensor size	1/2.5"
Resolution	2592 \times 1944
Frame rate	14 fps
Dynamic range	60 dB
SNR	38 dB
Gain	0 dB to 20 dB
Exposure time	34 μs to 1 s
Shutter mode	Off/Once/Continuous exposure mode
Acquisition mode	Continuous mode, single frame mode
Image buffer	128 MB
Pixel format	Mono 8/10/10p/12/12p
Electrical features	
Data interface	Gigabit Ethernet
Digital I/O	Opto-isolated input \times 1, Opto-isolated output \times 1, Bi-directional non-isolated I/O \times 1
Power supply	Voltage range: 5 VDC to 15 VDC, supports PoE power supply
Power consumption	< 2.75 W@12 VDC
Structure	
Lens mount	C-Mount
Dimension	29 mm \times 29 mm \times 42 mm (1.1" \times 1.1" \times 1.7")
Weight	Approx. 68 g (0.15 lb.)
Ingress protection	IP30 (under proper lens installation and wiring)
Temperature	Working temperature: 0 $^{\circ}\text{C}$ to 50 $^{\circ}\text{C}$ (32 $^{\circ}\text{F}$ to 122 $^{\circ}\text{F}$) Storage temperature: -30 $^{\circ}\text{C}$ to 70 $^{\circ}\text{C}$ (-22 $^{\circ}\text{F}$ to 158 $^{\circ}\text{F}$)
Humidity	20% to 80% RH, without condensation
General	
Client software	MVS or Third-Party Software meeting with GigE Vision Protocol
Operating system	32/64-bit Windows XP/7/10, 32/64-bit Linux and 64-bit MacOS
Compatibility	GigE Vision
Certification	CE, FCC, RoHS, KC

SEDECO
IMAGING

Germany, Austria, Switzerland
Sedeco Imaging GmbH
Unterer Dammweg 12
76149 Karlsruhe
Germany
T. +49 721 5604 7980
info@sedeco-imaging.com

BeNeLux
Sedeco Imaging B.V.
Trasmolenlaan 12
3447 GZ Woerden
the Netherlands
T. +31 348 749110
info@sedeco-imaging.nl

www.sedeco-imaging.com