

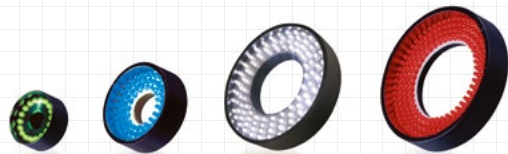
# Ring Light

## Flat Direct Ring Light

### IDR-F series

LEDs mounted on flat surface provide even, wide-area illumination

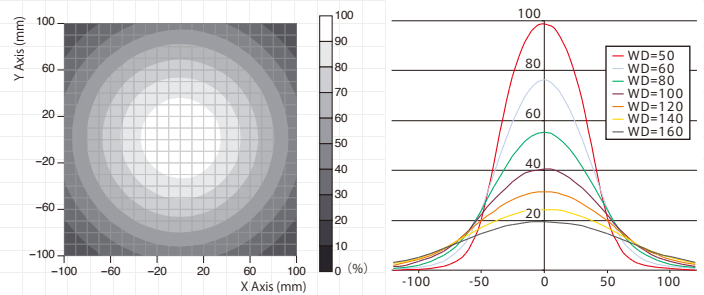
DC 24V Models Available



Model	Light Color	Power Consumption (W)	Input Voltage	SAG (*)	Power Supply	Drawing
IDR-F32/10□	DR	0.8	DC12V	C5	ILP-30M2 (P.69) IDGB series (P.67) other, overdrive power supply etc.	1
	DW B G	1.1		FF		
IDR-F43/15□	DR	1.8		C6		2
	DW B G	2.2		FF		
IDR-F50/15□	DR	3.1		DA		3
	DW B G	3.3		FF		
IDR-F60/32□	DR	3.6		C7		4
	DW B G	3.6		FF		
IDR-F70/37□	DR	6.6		C9	5	
	DW B G	5.6		FF		
IDR-F90/50□	DR	8.0		CD	6	
	DW B G	6.2		FF		
IDR-F100/50□	DR	8.5		FF	7	
	DW B G	6.5		FF		
IDR-F110/60□	DR	12.1		E1	8	
	DW B G	9.6		FF		

□ represents light color (DR=Red, DW=White, B=Blue, G=Green)  
 \*Diffusing plate is removable. Optional polarizing plate is available.  
 The IDR-F32/10 is only need the fixation or adapter.  
 \*Input voltage is DC 12V, but DC 24V models are also available. \*See page 60 for DC 24V models.  
 \*Sizes other than those above are also available.  
 \*The SAG value indicates the maximum voltage setting for SAG power supplies. For details, see page 75.

#### Luminance Distribution Chart (Reference Values)



Superbly uniform lighting is ensured even at a long working distance.  
 Measurement model: IDR-F110/60DW  
 WD : 200mm

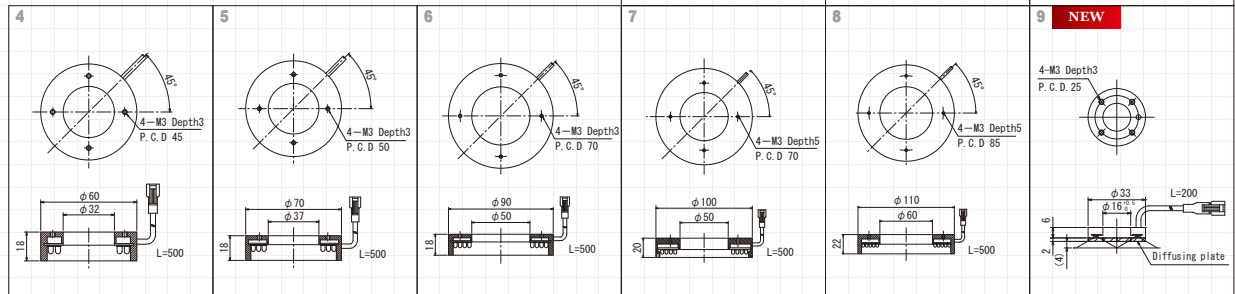
A wide, uniform lighting area is ensured by mounting the LED in parallel with the work surface.  
 Measurement model: IDR-F70/37DW

#### NEW Capable of mounting ultra-thin ring light on 16φ telecentric lens.



Model	Light Color	Power Consumption (W)	Input Voltage	SAG (*)	Power Supply	Drawing
IDR-F33/16RS	R	2	DC12V	A8	ILP-30M2 (P.69) IDGB series (P.67) other, overdrive power supply etc.	9
IDR-F33/16WS	W			D3		

\*Prepare the mounting holder. Please refer to P86.



Effect → A wide area can be photographed using flat illumination from above.

