

Digital Pulse Light Control Power Supply

IDGB series

Multi-function power supply with freely selectable interface



Fulfilling external control function

The lineup of "LAN communication/8bit parallel communication" switch, "RS-232C communication/8 bit parallel communication" switch, and "RS-485 communication/Analog 0-5V" switch.

-TP/PI Spec

LAN communication (TP)

With an ethernet communication, one computer is enabled to manage the devices on the network. An individual managing several IDGB series can be done by setting the IP address.

-S2/PI Spec

8bit Parallel Communication (PI)

Parallel communication makes switching of setting values high-speed.

RS-485 Communication (S4)

By setting the unit No. of each power supply, up to eight units can be individually controlled. It is also possible to manage up to 64 units in a lump by connecting an 8 channel power supply.

-S4/V1 Spec

RS-232C communication (S2)

With the RS-232C communication, it is easily to build an external control environment even in an environment susceptible to the noise.

Analog 0-5V (V1)

It can be controlled with the analog signal of 0-5V. Because light control can be done only by varying the voltage, it is easily to build an external control environment.

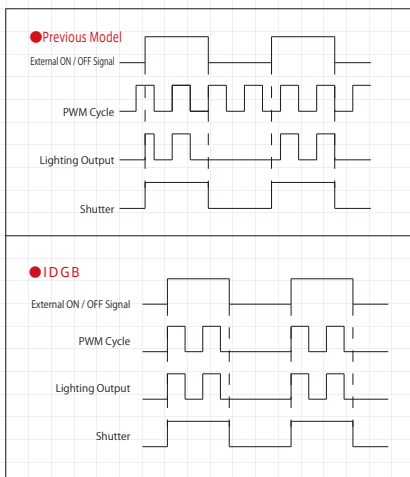
Easy to check the set value with the good visibility display

- Setting channel display
- Setting switch
- Digital display
- External Light Control Select
- Internal/external light control mode switch

All sizes are adjustable to DIN rail installation

Fully synchronizes the lighting output and external ON/OFF signal

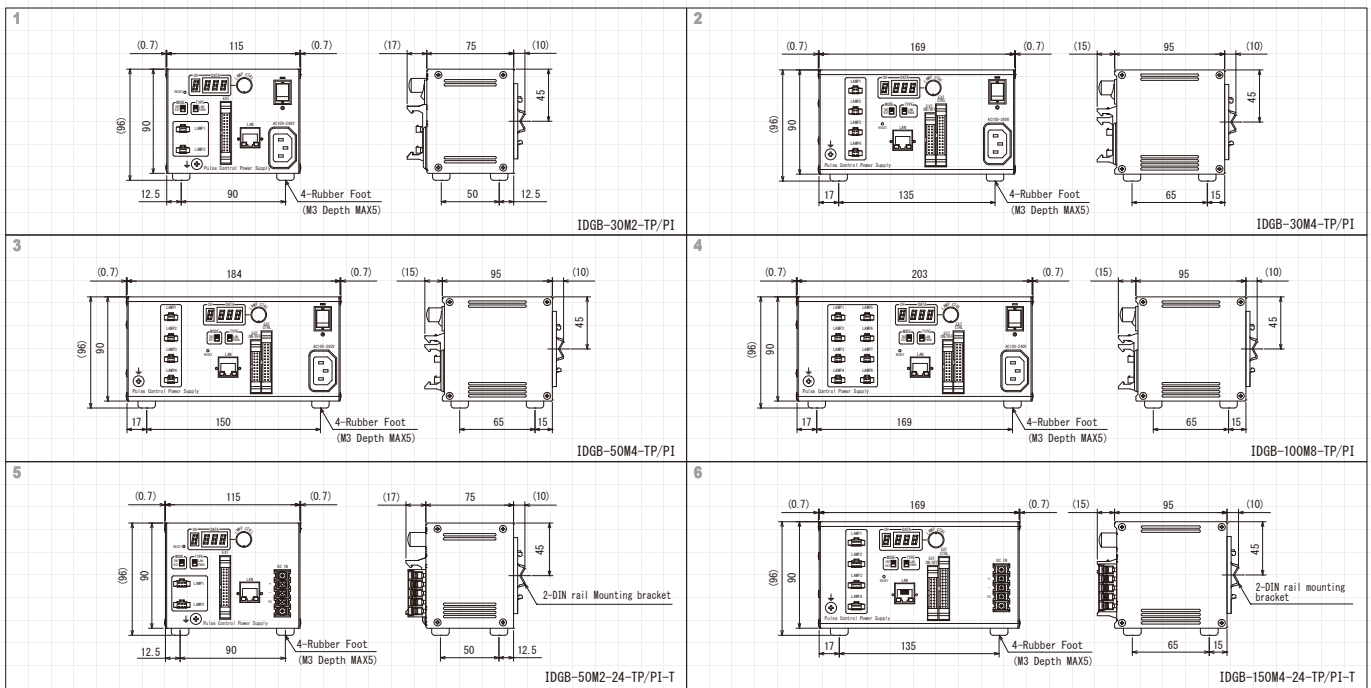
Our conventional products had a lighting fluctuation due to an asynchronism in the external ON/OFF signal and inner PWM cycle. However, the PWM cycle of these products synchronizes with the external ON/OFF signal so it has no lighting fluctuation.



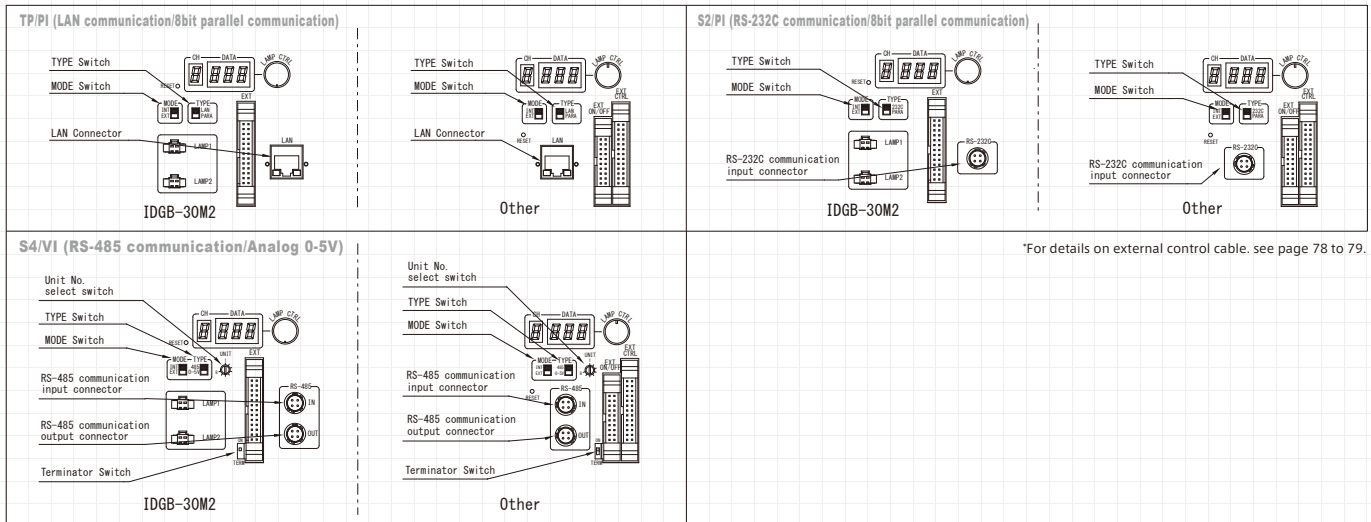
Various External ON/OFF Functions

Regarding the external ON/OFF mode, the "High Mode" which the lighting turns off with the signal and the "Low Mode" which the lighting turns on with the signal are switchable. External ON/OFF type has regular "Normal type", "Repeat type" which keeps lighting with one trigger, and "Single type" which turns the light on for one cycle with one trigger.

External ON/OFF Mode	High Mode	Low Mode
Normal Type	<ul style="list-style-type: none"> External ON / OFF Signal Power Supply Dimming Value (Duty Ratio) Lighting cycle (8 μs) 	<ul style="list-style-type: none"> External ON / OFF Signal Power Supply Dimming Value (Duty Ratio) Lighting cycle (8 μs)
Repeat Type Until either operation below is set by one external light signal, it keeps lighting on. a. Switching external ON/OFF type b. Power off	<ul style="list-style-type: none"> External ON / OFF Signal Power Supply Dimming Value (Duty Ratio) Lighting cycle (8 μs) 	<ul style="list-style-type: none"> External ON / OFF Signal Power Supply Dimming Value (Duty Ratio) Lighting cycle (8 μs)
Single Type By one external light signal, it sets one cycle lighting on.	<ul style="list-style-type: none"> External ON / OFF Signal Power Supply Dimming Value (Duty Ratio) Lighting cycle (8 μs) 	<ul style="list-style-type: none"> External ON / OFF Signal Power Supply Dimming Value (Duty Ratio) Lighting cycle (8 μs)



The layout of control part on the front panel



*For details on external control cable, see page 78 to 79.

Total Diverse Lineup of 63 Models

Our diverse lineup of 63 models includes two kinds input voltage of AC100~240V/DC 24V, two kinds of output voltage of DC 12V/24V, three capacities of 30W/50W/100W, three external control method of 「TP/PI」, 「S2/PI」, 「S4/VI」 and three channel choices of 2/4/8 each. The various selections give you the best choice of the power supply depending on light combination and environment.

Model	Input Voltage	Output Voltage	Capacity (W)	Channel numbers	Weight(g)	Drawing	
IDGB-30M2-****	AC100~240V	DC12V	30	2CH	700	1	
IDGB-30M4-****				4CH	1000	2	
IDGB-30M8-****				8CH			
IDGB-50M2-****			50	2CH	1200	3	
IDGB-50M4-****				4CH			
IDGB-50M8-****				8CH			
IDGB-100M2-****		100	DC24V	100	2CH		
IDGB-100M4-****					4CH	1300	4
IDGB-100M8-****					8CH		
IDGB-30M2-24-****				30	2CH	700	1
IDGB-30M4-24-****					4CH	1000	2
IDGB-30M8-24-****					8CH		
IDGB-50M2-24-****	50	2CH	1200	3			
IDGB-50M4-24-****		4CH					
IDGB-50M8-24-****		8CH					
IDGB-100M2-24-****	100	2CH					
IDGB-100M4-24-****		4CH	1300	4			
IDGB-100M8-24-****		8CH					
IDGB-50M2-24-****-T	DC24V		46	2CH	700	5	
IDGB-150M4-24-****-T				4CH			
IDGB-150M8-24-****-T				8CH	1000	6	

**** on the model represents a symbol of external control type.
 ·TP/PI: LAN communication/8bit parallel communication switchable type
 ·S2/PI: RS-232C communication/8bit parallel communication switchable type
 ·S4/VI: RS-485 communication/Analog 0-5V switchable type
 *The lighting connector number is different from the design depending on the channel number.
 *The lighting connector shape for DC24V output specification is different from the design's outline drawing.
 *For details on external control cable, see page 78 to 79.

Common Specifications

Light Control Method	PWM approx.125kHz
External Control	External ON/OFF, External Light Control
Protection Function	Overcurrent protection function, FAN error

Communication Specification(LAN)

Communication System	TCP/IP
Regulatory Compliance	IEEE802.3(10BASE-T), IEEE802.3u(100BASE-TX)
Communication Speed	10Mbps(10BASE-T), 100Mbps(100BASE-TX)
Connection Port Number	4 ports
Function	Auto MDI/MDIX, Auto Negotiation

Communication Specification(RS-232C/RS-485)

Communication Protocol	RS-232C/RS-485
Baud Rate	19200bps
Data Bit	8bit
Parity Bit	Even Parity
Stop Bit	1bit