

# 1,300,000 lx Forced Air Cooling Type Line Light

## IDBB-LSRF series

Capable of excellent output power over 1,300,000 lx  
Extensive lineup of highly uniform S type available



Special Optical Design

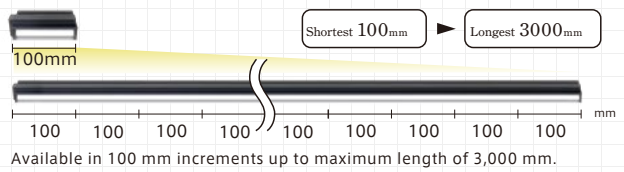
Forced air cooled

Power LEDs

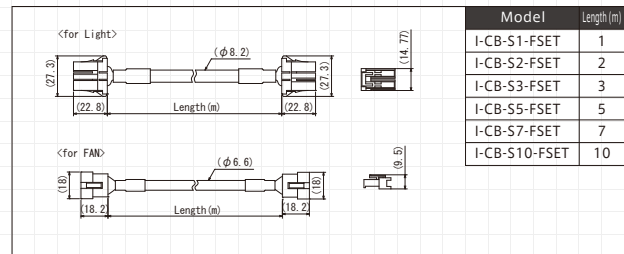
- A forced air cooling type is also available for the Brimax line light
- Forced air cooling system enables excellent output power over 1,000,000 lx
- Lineup includes the light emission sizes from 100 to 3,000 mm in 100 mm increments
- For highly uniform specification, -S is attached at the end of each model

Model	Light Color	Power consumption (W)	Input Voltage	Power Supply	Drawing	
IDBB-LSRF100W	W	40	DC48V	IWDV-300S-48 (P.63)	n=1	
IDBB-LSRF200W	W	80			n=2	
IDBB-LSRF300W	W	120			n=3	
IDBB-LSRF400W	W	160			n=4	
IDBB-LSRF500W	W	200			n=5	
IDBB-LSRF600W	W	240			n=6	
IDBB-LSRF700W	W	280			n=7	
IDBB-LSRF800W	W	320			1 n=8	
IDBB-LSRF900W	W	360			n=9	
IDBB-LSRF1000W	W	400			IWDV-600S-48 (P.63)	n=10
IDBB-LSRF1100W	W	440		n=11		
IDBB-LSRF1200W	W	480		n=12		
IDBB-LSRF1300W	W	520		n=13		
IDBB-LSRF1400W	W	560		n=14		
IDBB-LSRF1500W	W	600		n=15		
IDBB-LSRF1600W	W	640		n=16		
IDBB-LSRF1700W	W	680		n=17		
IDBB-LSRF1800W	W	720		n=18		
IDBB-LSRF1900W	W	760		n=19		
IDBB-LSRF2000W	W	800		IWDV-600S-48 2 unit (P.63)	n=20	
IDBB-LSRF2100W	W	840			n=21	
IDBB-LSRF2200W	W	880			n=22	
IDBB-LSRF2300W	W	920			2 n=23	
IDBB-LSRF2400W	W	960				n=24
IDBB-LSRF2500W	W	1000				n=25
IDBB-LSRF2600W	W	1040				n=26
IDBB-LSRF2700W	W	1080				n=27
IDBB-LSRF2800W	W	1120				n=28
IDBB-LSRF2900W	W	1160				n=29
IDBB-LSRF3000W	W	1200		n=30		

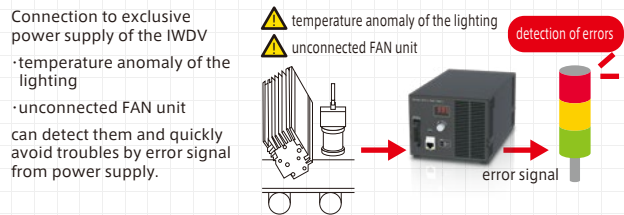
### Wide Selection of Sizes



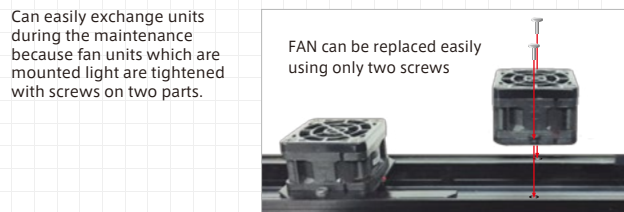
### Extension cable and FAN drive cable set



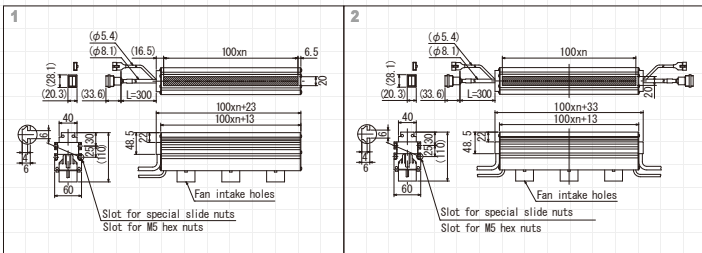
### Avoid trouble by error detection system



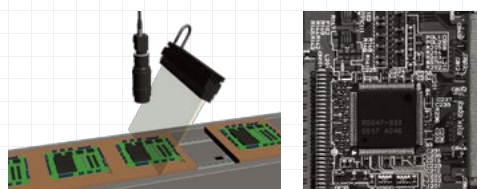
### Easy FAN replacement



\*See page 82 for condensing lens and optical diffusing plate models.  
\*Condensing lens ILBB-□ and optional diffusing plate IKBB-LSR□ can be mounted. □ represents size in 100mm increments. We line up the condense lens from 100 to 1000mm, and diffusing plate is from 100 to 1800mm. When ordering, specify number and type of condensing lenses and diffusing plates required. Diffusing plates are available with transmissivity of 30%, 60%, 80%, or 90%.

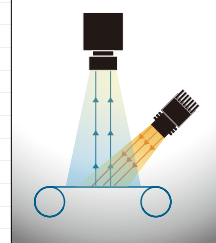


### Workpiece: Electronic component mounting board



Light used: IDBB-LSRF300W

### LIGHTING STRUCTURE



Power Supply (voltage light control)

IWDV-300S-48  
IWDV-600S-48

Light control: 1000 levels  
External Control: LAN/10-bit parallel

details are described in P63